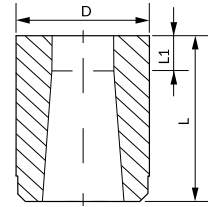


MATRIZ LISA SALIDA CÓNICA, RME_ HEADLESS MATRIX TAPER RELIEF RME_

Material: 1.2379 HWS

Dureza / Hardness: 62 ±2 HRC

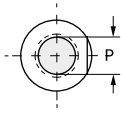


- ! También disponible en otros aceros y medidas bajo plano.
Also available in other steels and dimensions per dwg.

Standard taper:
- Roun shape: 1°
- Other shapes: 1,5°

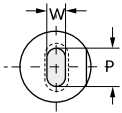
RMEC

Round



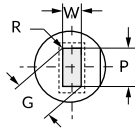
RMEO

Oblong



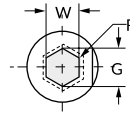
RMER

Rectangle

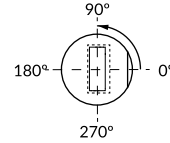


RMEH

Hexagon



Standard positioning: 0°



- ! Recomendamos montaje con bridas RBAM y RBAF.
Recommended assembly with RBAM and RBAF flanges.

- ! Indicar antigiro (AG_) en pedido. Ver antigiros pág. At73.
Specify locating device type (AG_) in your order. See locating device section page At73.

D ^{m5}	L ^{+1,5} ₀	Round	Shape		L ^{+0,5} ₀								
		P	Min W	Max G/P	20	22	25	28	30	32	35	40	
8	4	1,50 - 3,20	1,5	3,2	•	•	•	•	•	•	•	•	-
10	4	1,6 - 5,0	1,6	5	•	•	•	•	•	•	•	•	•
13	5	3,0 - 7,20	1,8	7,2	•	•	•	•	•	•	•	•	•
16	5	5,0 - 8,8	2,5	8,8	•	•	•	•	•	•	•	•	•
20	5	5,5 - 11,00	3,2	11	•	•	•	•	•	•	•	•	•
22	6	7,5 - 14,0	4	14	•	•	•	•	•	•	•	•	•
25	6	9,5 - 16,5	4,8	16,5	•	•	•	•	•	•	•	•	•
32	6	13,0 - 20,0	5,5	20	•	•	•	•	•	•	•	•	•
38	8	16,0 - 26,0	6,4	26	•	•	•	•	•	•	•	•	•
40	8	16,0 - 26,0	6,4	26	•	•	•	•	•	•	•	•	•
45	8	22,0 - 31,0	7,5	31	-	-	•	•	•	•	•	•	•
50	8	24,0 - 34,0	8	34	-	-	•	•	•	•	•	•	•
56	8	26,0 - 38,0	8,5	38	-	-	•	•	•	•	•	•	•
63	8	30,0 - 43,0	9	43	-	-	•	•	•	•	•	•	•
71	8	34,0 - 48,0	9,5	48	-	-	•	•	•	•	•	•	•
76	8	36,0 - 52,0	10	52	-	-	-	-	-	-	•	•	•
85	8	40,0 - 58,0	11	58	-	-	-	-	-	-	•	•	•
90	8	43,0 - 61,0	12	61	-	-	-	-	-	-	•	•	•
100	8	48,0 - 68,0	13	68	-	-	-	-	-	-	•	•	•

How to order:

Specify	RME_	D	L	Mat.	P o PxW	AG_
Example	RMEC	10	20	HWS	P4,0	AG4
	RMEO	32	30	HWS	P15,0 W6,0	AG5