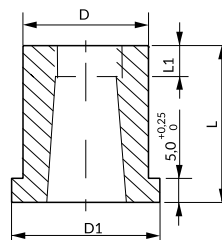


MATRIZ CON VALONA SALIDA CÓNICA RMF_ HEADED MATRIX TAPER RELIEF RMF_

Material: 1.2379 HWS

Dureza / Hardness: 62 ±2 HRC

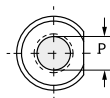


Standard taper:
- Round shape: 1°
- Other shapes: 1,5°

i También disponible en otros aceros y medidas bajo plano.
Also available in other steels and dimensions per dwg.

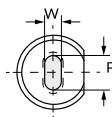
RMFC

Round



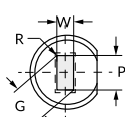
RMFO

Oblong



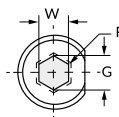
RMFR

Rectangle

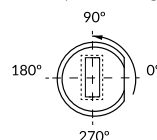


RMFH

Hexagon



Standard positioning: 0°



i Indicar antigiro (AG_) en pedido. Ver antigiros [pág. At73](#).
Specify locating device type (AG_) in your order. See locating device section [page At73](#).

D	D1 ⁰ _{-0,25}	L1	Round		Shape		L ^{+0,5} ₀								
			P	Min W	Max G/P	20	22	25	28	30	32	35	40		
8	11	4	1,50 - 3,20	1,5	3,2	•	•	•	•	•	•	•	•	•	-
10	13	4	1,60 - 5,00	1,6	5	•	•	•	•	•	•	•	•	•	•
13	16	5	1,80 - 7,20	1,8	7,2	•	•	•	•	•	•	•	•	•	•
16	19	5	5,0 - 8,80	2,5	8,8	•	•	•	•	•	•	•	•	•	•
20	23	5	5,50 - 11,00	3,2	11	•	•	•	•	•	•	•	•	•	•
22	25	6	7,50 - 14,00	4	14	•	•	•	•	•	•	•	•	•	•
25	28	6	9,50 - 16,50	4,8	16,5	•	•	•	•	•	•	•	•	•	•
32	35	6	13,00 - 20,00	5,5	20	•	•	•	•	•	•	•	•	•	•
38	41	8	16,00 - 26,00	6,4	26	•	•	•	•	•	•	•	•	•	•
40	43	8	16,00 - 26,00	6,4	26	•	•	•	•	•	•	•	•	•	•
45	48	8	22,00 - 31,00	7,5	31	•	•	•	•	•	•	•	•	•	•

How to order:

Specify	RMF_	D	L	Mat.	P o PxW	AG_
Example	RMFC	10	20	HWS	P4,0	AG2
	RMFO	32	30	HWS	P15,0 W6,0	AG3