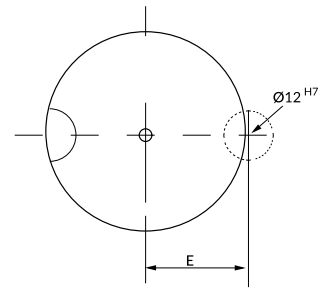


MATRIZ REVERSIBLE PARA MECANIZAR RMHB MACHINABLE REVERSIBLE FLAT MATRIX RMHB

Material: 1.2379 HWS

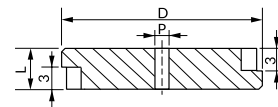
Dureza / Hardness: 62 ±2 HRC

STOCK



Recomendamos montaje con tornillo **RTAM** y brida **RAAM**.
Recommended assembly with **RTAM** screw and **RAAM** clamp.

También disponible en otros aceros y medidas bajo plano.
Also available in other steels and dimensions per dwg.



| D ^{h5} | E ^{±0,01} | P | L ^{+0,3 0} | | |
|-----------------|--------------------|-----|-------------------------|---|----|
| | | | 5 | 8 | 10 |
| 13 | 10,5 | 1,5 | • | • | - |
| 16 | 11,5 | 2 | • | • | - |
| 20 | 13,5 | 2 | • | • | • |
| 25 | 16 | 2 | • | • | • |
| 32 | 19,5 | 2 | • | • | - |
| 40 | 23,5 | 2 | • | • | - |
| 50 | 28,5 | 2 | • | • | - |

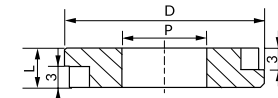
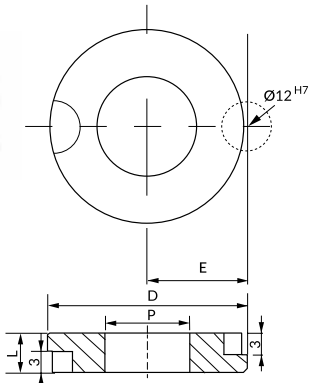
How to order:
Specify RMHB D L Mat.
Example RMHB 20 8 HWS
RMHB 32 5 HWS

MATRIZ REVERSIBLE RMH_ REVERSIBLE FLAT MATRIX RMH_

Material: 1.2379 HWS

Dureza / Hardness: 62 ±2 HRC

También disponible en otros aceros y medidas bajo plano.
Also available in other steels and dimensions per dwg.

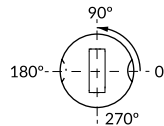
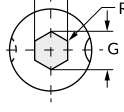
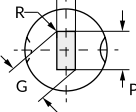
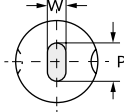
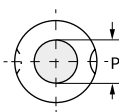


RMHC
Round

RMHO
Oblong

RMHR
Rectangle

RMHH
Hexagon



Standard positioning: 0°

| D ^{h5} | E ^{±0,01} | Round | Shape | | L ^{+0,3 0} | | |
|-----------------|--------------------|---------------|---------|---------|-------------------------|---|----|
| | | P | Min P-W | Max G,P | 5 | 8 | 10 |
| 13 | 10,5 | 1,80 - 7,20 | 2 | 7 | • | • | - |
| 16 | 11,5 | 5,00 - 8,80 | 3 | 8 | • | • | - |
| 20 | 13,5 | 5,50 - 11,00 | 7 | 11 | • | • | • |
| 25 | 16 | 9,50 - 16,50 | 9 | 16 | • | • | • |
| 32 | 19,5 | 13,00 - 20,00 | 16 | 22 | • | • | - |
| 40 | 23,5 | 16,60 - 26,00 | 21 | 28 | • | • | - |
| 50 | 28,5 | 20,00 - 40,00 | 25 | 37 | • | • | - |

Recomendamos montaje con tornillo **RTAM** y brida **RAAM**.
Recommended assembly with **RTAM** screw and **RAAM** clamp.

Para un posicionamiento distinto al estándar, indicar posición deseada (A_°) en pedido.
To other alternate location, specify locating device position (A_°) in your order.

How to order:
Specify RMH_ D L Mat. P o PxW A_°
Example RMHO 20 8 HWS P4,0 A100°
RMHR 32 5 HWS P20,0 W18,0 A20°