

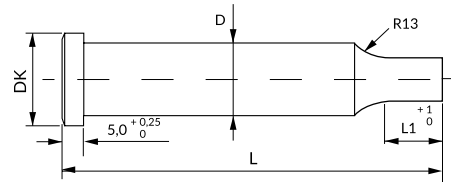
PUNZÓN CABEZA CILÍNDRICA RPA_

CYLINDRICAL HEAD PUNCH RPA_

Material / Material: 1.3343 HSS

Dureza cuerpo / Body hardness: 64 ±2 HRC

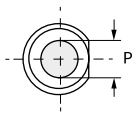
Dureza cabeza / Head hardness: 50 ±5 HRC



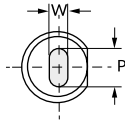
i También disponible en otros aceros y medidas bajo plano.
Also available in other steels and dimensions per dwg.

i Opciones de recubrimiento en [pág. At78](#).
See [page At78](#) for coating options.

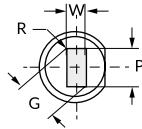
RPBAC
Round



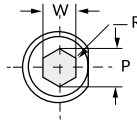
RPAO
Oblong



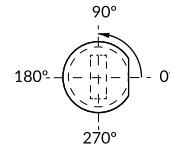
RPAR
Rectangle



RPAH
Hexagon



Standard positioning: 0°



i Indicar anti giro (AG_) en pedido. Ver anti giros [pág. At72](#).
Specify locating device type (AG_) in your order. See locating device section [page At72](#).

Standard: ISO 8020 B

D m5	Round	Shape		Head	L ^{+0.5} ₀						L1		
	P w±0,1	Min W	Max G/P	DK-0,25	63	71	80	90	100	110	125	Standard	Max.
5	1,60 - 4,99	1,6	5	8	•	•	•	•	•	•	•	13	19
6	1,6 - 4,99	1,6	6	9	•	•	•	•	•	•	•	13	19
8	1,6 - 5,99	2,5	8	11	•	•	•	•	•	•	•	19	25
10	2,5 - 7,99	3,2	10	13	•	•	•	•	•	•	•	19	25
13	3,2 - 9,99	4,5	13	16	•	•	•	•	•	•	•	19	25
16	5 - 12,99	6	16	19	•	•	•	•	•	•	•	19	25
20	10 - 19,99	8	20	23	•	•	•	•	•	•	•	19	25
25	12 - 24,99	9	25	28	•	•	•	•	•	•	•	19	25
32	16 - 31,99	10	32	35	•	•	•	•	•	•	•	25	30
40	30 - 39,99	14	40	43	-	-	•	•	•	•	•	25	30
45	25 - 44,99	10	44,99	48	-	-	•	•	•	•	•	25	30
50	30 - 49,99	12	49,99	53	-	-	•	•	•	•	•	25	30
56	35 - 55,99	13	55,99	59	-	-	•	•	•	•	•	25	30
63	40,00 - 62,99	14	62,99	66	-	-	•	•	•	•	•	25	30

How to order:

Specify	RPA_	D	L	Mat.	P o PxW	L1	AG_
Example	RPAC	8	71	HSS	P3,0	20	AG1
	RPAO	13	80	HSS	P12,0 W6,0	17	AG2