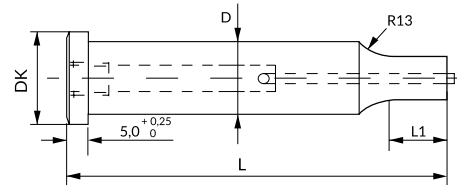


PUNZÓN CABEZA CILÍNDRICA CON EXPULSOR RPB_ CYLINDRICAL HEAD PUNCH WITH EJECTOR RPB_

Material / Material: 1.3343 HSS

Dureza cuerpo / Body hardness: 64 ±2 HRC

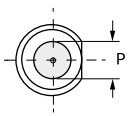
Dureza cabeza / Head hardness: 50 ±5 HRC



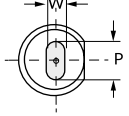
1 También disponible en otros aceros y medidas bajo plano.
Also available in other steels and dimensions per dwg.

1 Opciones de recubrimiento en [pág. At78](#).
See [page At78](#) for coating options.

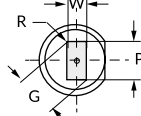
RPBC
Round



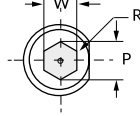
RPBO
Oblong



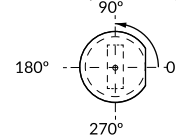
RPBR
Rectangle



RPBH
Hexagon



Standard positioning: 0°



1 Indicar anti giro (AG_) en pedido. Ver anti giros [pág. At72](#).
Specify locating device type (AG_) in your order. See locating device section [page At72](#).

Standard: ISO 8020 F

| D m ⁵ | Round | | Shape | | Head | | L $\begin{smallmatrix} +0,5 \\ 0 \end{smallmatrix}$ | | | | | | L1 $\begin{smallmatrix} +1 \\ 0 \end{smallmatrix}$ | |
|------------------|---------------|-------|---------|-------------------------------------------------------|------|----|-----------------------------------------------------|----|-----|-----|-----|----------|----------------------------------------------------|--|
| | P | Min W | Max G/P | DK $\begin{smallmatrix} 0 \\ -0,25 \end{smallmatrix}$ | 63 | 71 | 80 | 90 | 100 | 110 | 125 | Standard | Max. | |
| 5 | 1,60 - 4,99 | 1,6 | 5 | 8 | • | • | • | • | • | • | • | 13 | 19 | |
| 6 | 2,50 - 5,99 | 2,5 | 6 | 9 | • | • | • | • | • | • | • | 13 | 19 | |
| 8 | 3,20 - 7,99 | 3,2 | 8 | 11 | • | • | • | • | • | • | • | 19 | 25 | |
| 10 | 4,50 - 9,99 | 4,5 | 10 | 13 | • | • | • | • | • | • | • | 19 | 25 | |
| 13 | 6,00 - 12,99 | 6 | 13 | 16 | • | • | • | • | • | • | • | 19 | 25 | |
| 16 | 8,00 - 15,99 | 7,5 | 16 | 19 | • | • | • | • | • | • | • | 19 | 25 | |
| 20 | 10,00 - 19,99 | 8 | 20 | 23 | • | • | • | • | • | • | • | 19 | 25 | |
| 25 | 12,00 - 24,99 | 9 | 25 | 28 | • | • | • | • | • | • | • | 19 | 25 | |
| 32 | 16,00 - 31,99 | 10 | 32 | 35 | • | • | • | • | • | • | • | 25 | 30 | |
| 40 | 30,00 - 39,99 | 14 | 40 | 43 | - | - | • | • | • | • | • | 25 | 30 | |
| 45 | 25,00 - 44,99 | 10 | 44,99 | 48 | - | - | • | • | • | • | • | 25 | 30 | |
| 50 | 30,00 - 49,99 | 12 | 49,99 | 53 | - | - | • | • | • | • | • | 25 | 30 | |
| 56 | 35,00 - 55,99 | 13 | 55,99 | 59 | - | - | • | • | • | • | • | 25 | 30 | |
| 63 | 40,00 - 62,99 | 14 | 62,99 | 66 | - | - | • | • | • | • | • | 25 | 30 | |

Specify
Example

How to order:
 RPB_ D L Mat. P o PxW L1 AG_
 RPBC 8 71 HSS P3,5 20 AG1
 RPBO 13 80 HSS P12,0 W6,0 17 AG2