

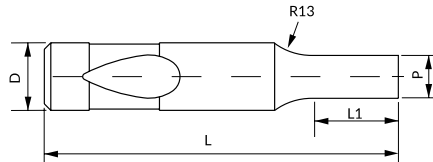
PUNZÓN CAMBIO RÁPIDO CARGA FUERTE RPC_ HEAVY DUTY BALL LOCK PUNCH RPC_

Material / Material: 1.3343 HSS
Dureza / Hardness: 64 ±2 HRC

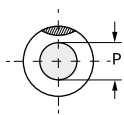


i También disponible en otros aceros y medidas bajo plano.
Also available in other steels and dimensions per dwg.

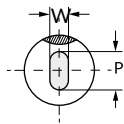
i Opciones de recubrimiento en [pág. At78](#).
See [page At78](#) for coating options.



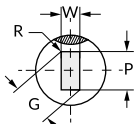
RPCC
Round



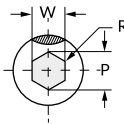
RPCO
Oblong



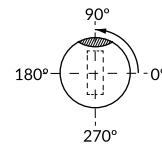
RPCR
Rectangle



RPCH
Hexagon



Standard positioning: 0°



i Para un posicionamiento distinto al estándar, indicar posición deseada (B_°) en pedido.
To order alternate location, specify locating device position (B_°) in your order.

Standard: ISO 10071-2 B

D g5	Round	Shape		L ^{+0.5} ₀						L1	
	P	Min W	Max G/P	71	80	90	100	110	125	Standard	Max.
10	2,5 - 9,98	2,50	10,00	•	•	•	•	•	•	19	25
13	5,00 - 12,98	4,50	13,00	•	•	•	•	•	•	19	25
16	8,00 - 15,98	6,00	16,00	•	•	•	•	•	•	19	25
20	12,00 - 19,98	8,00	20,00	•	•	•	•	•	•	19	25
25	16,00 - 24,98	10,00	25,00	-	•	•	•	•	•	19	25
32	24,00 - 31,98	12,00	32,00	-	•	•	•	•	•	19	25
40	30,00 - 39,98	14,00	40,00	-	•	•	•	•	•	25	30

How to order:

Specify	RPC_	D	L	Mat.	P o PxW	L1	B°
Example	RPCC	10	71	HSS	P5,0	20	B45°
	RPCO	25	80	HSS	P21,0 W11,0	17	B190°