

## PUNZÓN CAMBIO RÁPIDO CARGA FUERTE CON EXPULSOR RPD\_ HEAVY DUTY EJECTOR BALL LOCK PUNCH RPD\_

Material / Material: 1.3343 HSS

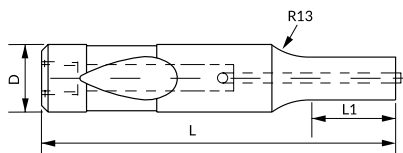
Dureza / Hardness: 64 ±2 HRC

STOCK



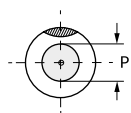
**i** También disponible en otros aceros y medidas bajo plano.  
Also available in other steels and dimensions per dwg.

**i** Opciones de recubrimiento en [pág. At78](#).  
See [page At78](#) for coating options.



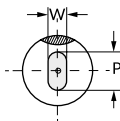
### RPDC

Round



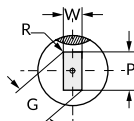
### RPDO

Oblong



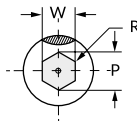
### RPDR

Rectangle

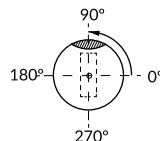


### RPDH

Hexagon



Standard positioning: 0°



**i** Para un posicionamiento distinto al estándar, indicar posición deseada (B\_°) en pedido.  
To order alternate location, specify locating device position (B\_°) in your order.

Standard: ISO 10071-2 F

D #5	Round	Shape		L <sup>+0.5</sup> <sub>0</sub>							L1	
	P	Min W	Max G/P	63	71	80	90	100	110	125	Standard	Max.
10	2,5 - 9,98	2,50	10,00	•	•	•	•	•	•	•	19	25
13	5,00 - 12,98	4,50	13,00	•	•	•	•	•	•	•	19	25
16	8,00 - 15,98	6,00	16,00	•	•	•	•	•	•	•	19	25
20	12,00 - 19,98	8,00	20,00	•	•	•	•	•	•	•	19	25
25	16,00 - 24,98	10,00	25,00	-	-	•	•	•	•	•	19	25
32	24,00 - 31,98	12,00	32,00	-	-	•	•	•	•	•	25	25
40	30,00 - 39,98	14,00	40,00	-	-	•	•	•	•	•		30

Specify RPD\_ D L Mat. P o PxW L1 B°  
Example RPDC 10 71 HSS P5,0 20 B45°  
RPDO 25 80 HSS P21,0 W11,0 17 B190°

How to order: