

PUNZÓN CABEZA CÓNICA CON EXPULSOR RPL_ CONICAL HEAD PUNCH WITH EJECTOR RPL_

Material: 1.2379 HWS

Dureza cuerpo / Body hardness: 62 ±2 HRC

Dureza cabeza / Head hardness: 45 ±5 HRC

Material: 1.3343 HSS

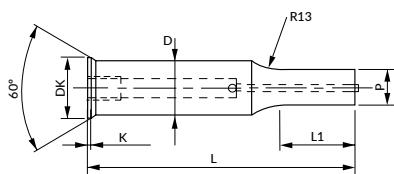
Dureza cuerpo / Body hardness: 64 ±2 HRC

Dureza cabeza / Head hardness: 50 ±5 HRC



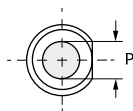
i También disponible en otros aceros y medidas bajo plano.
Also available in other steels and dimensions per dwg.

i Opciones de recubrimiento en [pág. At78](#).
See [page At78](#) for coating options.



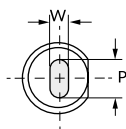
RPLC

Round



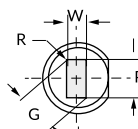
RPLO

Oblong



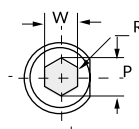
RPLR

Rectangle

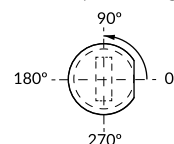


RPLH

Hexagon



Standard positioning: 0°



i Indicar antigiro (AG_) en pedido. Ver antigiros [pág. A72](#).

Specify locating device type (AG_) in your order. See locating device section [page A72](#).

D h6	Round	Shape		Head		^{+0,5} L 0										L1		
	P	Min W	Max G/P	DK ±0,1	K ±0,2	50	56	60	63	70	71	80	90	100	Standard	Max		
6	2,50 - 5,99	1,6	5	8	0,5	•	•	•	•	•	•	•	•	•	•	•	13	13
8	3,20 - 7,99	3,2	8	10	1	•	•	•	•	•	•	•	•	•	•	•	19	19
10	4,50 - 9,99	4,5	10	12	1	•	•	•	•	•	•	•	•	•	•	•	25	25
13	6 - 12,99	6	13	15	1	•	•	•	•	•	•	•	•	•	•	•	25	25
16	8 - 15,99	7,5	16	18	1,5	•	•	•	•	•	•	•	•	•	•	•	25	25
20	10 - 19,99	8	20	22	1,5	-	•	•	•	•	•	•	•	•	•	•	25	25
25	12 - 24,99	9	25	27	1,5	-	•	•	•	•	•	•	•	•	•	•	25	25

How to order:

Specify	RPL_	D	L	Mat.	P o PxW	L1	AG_
Example	RPLC	8	70	HWS	P3,0	L1=19	AG1
	RPLO	13	80	HSS	P12,0 W6,0	L1=24	AG2