

PUNZÓN CABEZA 30° RPM_ 30° HEADED PUNCH RPM_

Material: 1.3343 HSS

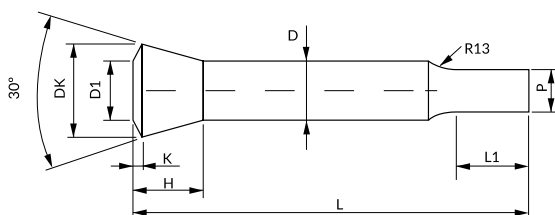
Dureza cuerpo / Body hardness: 64 ±2 HRC

Dureza cabeza / Head hardness: 50 ±5 HRC

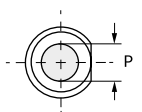


i También disponible en otros aceros y medidas bajo plano.
Also available in other steels and dimensions per dwg.

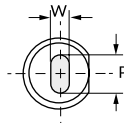
i Opciones de recubrimiento en [pág. At78](#).
See [page At78](#) for coating options.



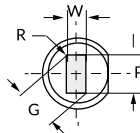
RPMC
Round



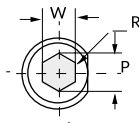
RPMO
Oblong



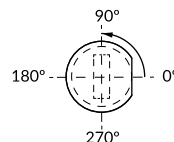
RPMR
Rectangle



RPMH
Hexagon



Standard positioning: 0°



! Indicar antigiro (AG_) en pedido. Ver antigiros [pág At72](#).
Specify locating device type (AG_) in your order. See locating device section [page At72](#).

| D h6 | Round | Shape | | Head | | | | L $\begin{smallmatrix} +1,0 \\ 0 \end{smallmatrix}$ | | | | | | L1 $\begin{smallmatrix} +0,5 \\ 0 \end{smallmatrix}$ | |
|------|------------|-------|---------|--|-----|----|-----|---|----|----|-----|-----|-----|--|-----|
| | P | MIN W | MAX G/P | DK $\begin{smallmatrix} 0 \\ -0,3 \end{smallmatrix}$ | DK | H | K | 70 | 80 | 90 | 100 | 120 | 140 | Standard | Max |
| 4 | 1,6 - 3,99 | 1,6 | 4 | 6,6 | 3,8 | 6 | 1 | • | • | • | • | - | - | 8 | 13 |
| 5 | 1,6 - 4,99 | 1,6 | 5 | 8,2 | 5 | 7 | 1 | • | • | • | • | • | - | 8 | 13 |
| 6 | 1,6 - 5,99 | 1,6 | 6 | 9,7 | 6 | 8 | 1 | • | • | • | • | • | - | 8 | 13 |
| 7 | 2,0 - 6,99 | 2,0 | 7 | 11,8 | 7 | 10 | 1 | • | • | • | • | • | - | 8 | 13 |
| 8 | 2,5 - 7,99 | 2,5 | 8 | 12,8 | 8 | 10 | 1 | • | • | • | • | • | - | 8 | 13 |
| 9 | 3,2 - 8,99 | 3,2 | 9 | 14,4 | 9 | 11 | 1 | • | • | • | • | • | - | 8 | 13 |
| 10 | 3,2 - 9,99 | 3,2 | 10 | 15,9 | 10 | 12 | 1 | • | • | • | • | • | - | 19 | 25 |
| 11 | 5 - 10,99 | 4,5 | 11 | 17,4 | 11 | 13 | 1,5 | • | • | • | • | • | • | 19 | 25 |
| 12 | 5 - 11,99 | 4,5 | 12 | 18,7 | 12 | 14 | 1,5 | • | • | • | • | • | • | 19 | 25 |
| 13 | 5 - 12,9 | 4,5 | 13 | 20,2 | 13 | 15 | 1,5 | • | • | • | • | • | - | 19 | 25 |
| 14 | 6-13,9 | 6,0 | 14 | 21,8 | 14 | 16 | 1,5 | • | • | • | • | • | • | 19 | 25 |
| 15 | 7-14,9 | 6,0 | 15 | 23,3 | 15 | 17 | 1,5 | • | • | • | • | • | - | 19 | 25 |
| 16 | 8 - 15,9 | 6,0 | 16 | 24,6 | 16 | 18 | 2 | • | • | • | • | • | • | 19 | 25 |

How to order:

Specify RPM_ D L Mat. P o PxW L1 AG_
Example RPMC 8 70 HSS P3,0 L1=12 AG1
RPMO 13 80 HSS P12,0 W4,6 L1=17 AG2