

PUNZÓN CABEZA CILÍNDRICA REFORZADA RPV_ REINFORCED CYLINDRICAL HEAD PUNCH RPV_

Material: PM4

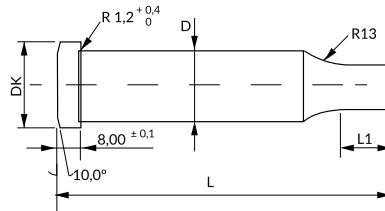
Dureza cuerpo / Body hardness: 61 ±1 HRC

Dureza cabeza / Head hardness: 50 ±5 HRC

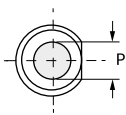


i También disponible en otros aceros y medidas bajo plano.
Also available in other steels and dimensions per dwg.

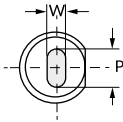
i Opciones de recubrimiento en [pág. At78](#).
See [page At78](#) for coating options.



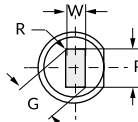
RPVC
Round



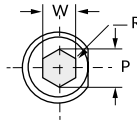
RPVO
Oblong



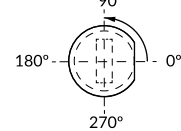
RPVR
Rectangle



RPVH
Hexagon



Standard positioning: 0°



i Indicar antigiro (AG_) en pedido. Ver antigiros [pág. At72](#).
Specify locating device type (AG_) in your order. See locating device section [page At72](#).

D m5	Round	Shape		Head	L ^{+0.3} ₀				L1	
	P	Min W	Max G/P	DK	70	80	90	100	Standard	Max.
8	3,1-7,99	3,1	8	13	•	•	•	•	19	25
10	3,2-9,99	3,2	10	15	•	•	•	•	19	25
13	5-12,99	4,5	13	18	•	•	•	•	19	25
16	8-15,99	6	16	21	•	•	•	•	19	25
20	10-19,99	8	20	25	•	•	•	•	19	25
25	12-24,99	9	25	30	•	•	•	•	19	25
32	16-31,99	10	32	37	•	•	•	•	25	30

How to order:

Specify	RPV_	D	L	Mat.	P o PxW	L1	AG_
Example	RPVC	8	70	PM4	P3,5	20	AG1
	RPVO	13	80	PM4	P12,0 W6,0	17	AG2