

## PUNZÓN CABEZA CILÍNDRICA REFORZADA CON EXPULSOR RPZ\_ REINFORCED CYLINDRICAL HEAD PUNCH WITH EJECTOR RPZ\_

Material: PM4

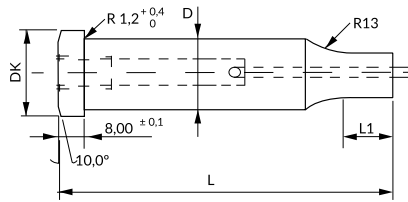
Dureza cuerpo / Body hardness: 61 ±1 HRC

Dureza cabeza / Head hardness: 50 ±5 HRC



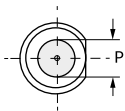
**i** También disponible en otros aceros y medidas bajo plano.  
Also available in other steels and dimensions per dwg.

**i** Opciones de recubrimiento en [pág. At78](#).  
See [page At78](#) for coating options.



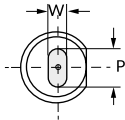
### RPZC

Round



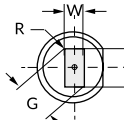
### RPZO

Oblong



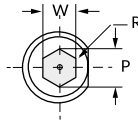
### RPZR

Rectangle

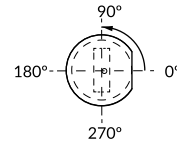


### RPZH

Hexagon



Standard positioning: 0°



**i** Indicar antigiro (AG\_) en pedido. Ver antigiros [pág. At72](#).  
Specify locating device type (AG\_) in your order. See locating device section [page At72](#).

D m5	DK <sup>0</sup> <sub>-0,3</sub>	Round		Shape		L <sup>+0,3</sup> <sub>0</sub>				L1	
		P	Min W	Max G/P	70	80	90	100	Standard	Max.	
8	13	4-7,99	4	8	•	•	•	•	19	25	
10	15	4,5-9,99	4,5	10	•	•	•	•	19	25	
13	18	6-12,99	6	13	•	•	•	•	19	25	
16	21	8-15,99	7,5	16	•	•	•	•	19	25	
20	25	10-19,99	8	20	•	•	•	•	19	25	
25	30	12-24,99	9	25	•	•	•	•	19	25	
32	37	16-31,99	10	32	•	•	•	•	25	30	

How to order:

Specify	RPZ_	D	L	Mat.	P o PxW	L1	AG_
Example	RPZC	8	70	PM4	P5,0	20	AG1
	RPZO	13	80	PM4	P12,0 W6,0	17	AG2