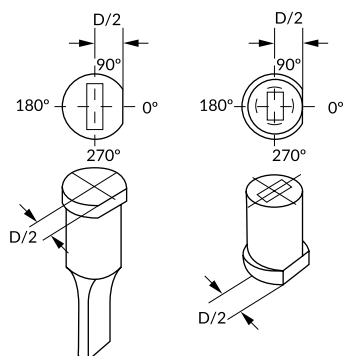


ANTIQUIROS PARA PRODUCTOS CON CABEZA / VALONA AG_ LOCATING DEVICES FOR HEADED PRODUCTS AG_

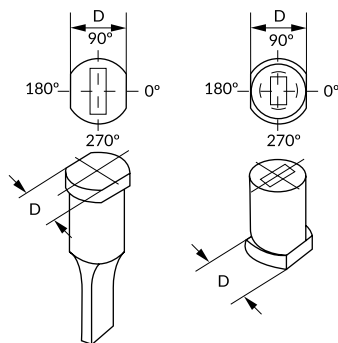
AG1

Fresado / Key Flat



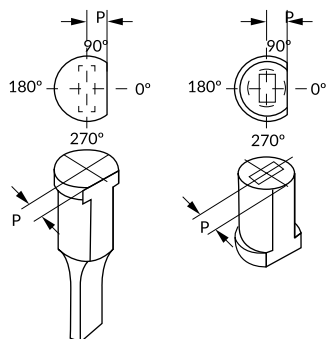
AG2

Doble fresado / Double flat



AG3

Cuerpo fresado / Body flat



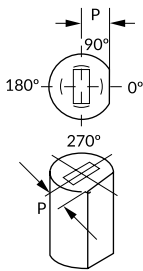
i Especificar P en pedido.
Specify P in your order.

i Los punzones y las matrices siempre se miran a troquel cerrado.
Parts are viewed in die position looking from above the die.

ANTIGIROS EN MATRIZ LISA AG_ LOCATING DEVICES IN HEADLESS MATRIX AG_

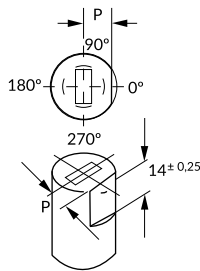
AG4

Key Flat



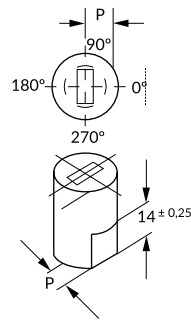
AG5

Step flat top



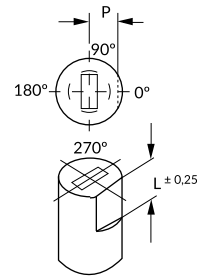
AG6

Step flat bottom



AGS

Customizable

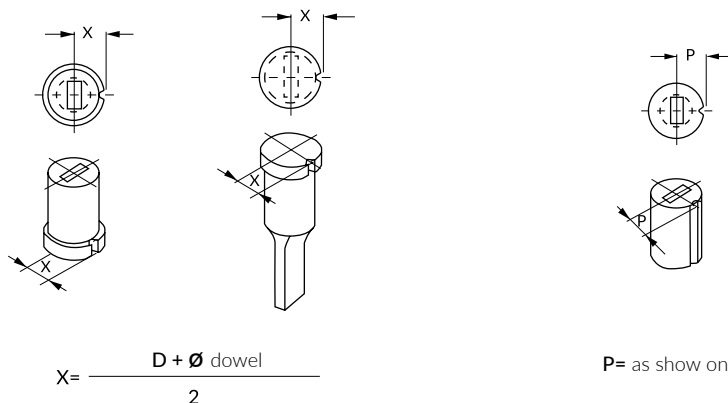


i Los punzones y las matrices siempre se miran a troquel cerrado.
Parts are viewed in die position looking from above the die.

i Especificar P y L en el pedido.
Specify P and L in your order.

D	$p_{0}^{+0,02}$
8	3,5
10	4
13	5,5
16	7
20	8,5
22	9,5
25	11
32	14
38	17
40	18
45	20,5
50	23
56	26
63	29,5
71	33,5
76	35,5
85	40
90	42,5
100	47,5

RANURA PARA PASADOR AG_ DOWEL SLOT AG_



i Los punzones y las matrices siempre se miran a troquel cerrado.
Parts are viewed in die position looking from above the die.

i Para Ø de pasador distinto a 3, 4 o 6, indicar Ø y P en pedido.
For dowel Ø different to 3, 4 or 6, specify Ø and P in your order.

Tabla para matrices lisas / Chart for headless matrix

D	p ± 0.013			
	Ø3 dowel	Ø4 dowel	Ø6 dowel	Other Ø
10	5,5	6	7	Specify in your order
13	6,7	7,2	8,2	Specify in your order
16	8	8	9	Specify in your order
20	10	10	11	Specify in your order
22	11	11	12	Specify in your order
25	12,5	12,5	13,5	Specify in your order
≥32	D/2	D/2	D/2	Specify in your order

Dowel Ø	How to order
3	AG 7
4	AG 8
6	AG 9
Other	AGP + Dowel Ø + P