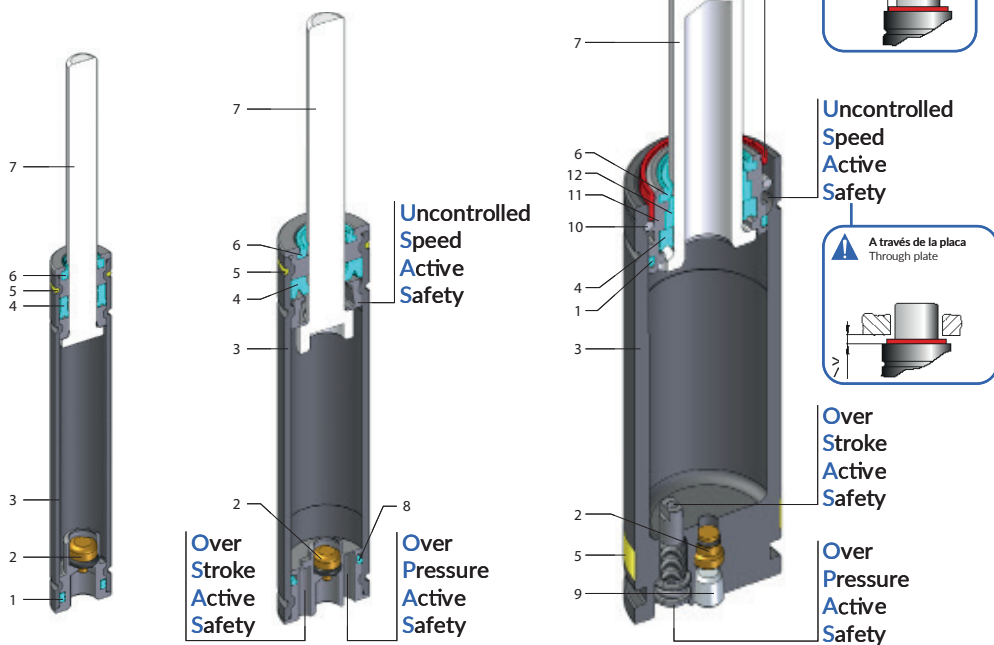


CILINDRO M GAS SPRING M

STOCK



M 50 - M 70

M 90 - M 200

M 300

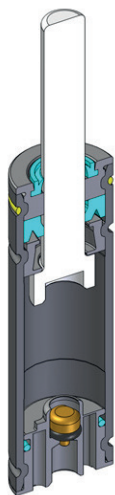
Standard: VDI

Model	Body Ø	Stroke Cu	Initial force F0	OSAS	USAS	OPAS	SKUDO	SW (optional)
	mm	mm	daN					
M50	12	7 - 125	6 - 50	-	-	-	-	•
M70	15	7 - 125	8 - 70	-	-	-	-	•
M90	19	7 - 125	5 - 90	•	•	•	-	•
M200	25	7 - 125	17 - 200	•	•	•	-	•
M300	32	7 - 125	80 - 320	•	•	-	-	•

1	Anillo dual / Dual ring seal
2	Válvula / Valve
3	Cuerpo / Body
4	Retén / Rod seal
5	Código de color de fuerza / Force color code
6	Retén / Rod wiper
7	Vástago (Nitrurado) / Rod (Nitrited Super finished)
8	Anillo-O / O-ring
9	Tapón / Stopper
10	Anillo de retención / Retaining ring
11	Casquillo / Bush
12	Anillo guía / Guide ring

CILINDRO M GAS SPRING M

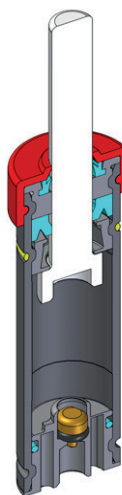
Versiones disponibles
Available versions



Standard code



Cilindro
GAS SPRING



Standard code + W



Cilindro
GAS SPRING
+
Rascador secundario
Secondary wiper



See p. Ct163

MINI CILINDRO M 50 MINI GAS SPRING M 50

Active safety

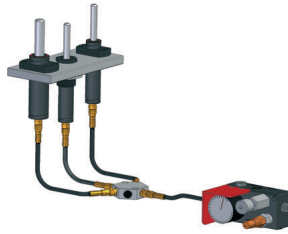


SW

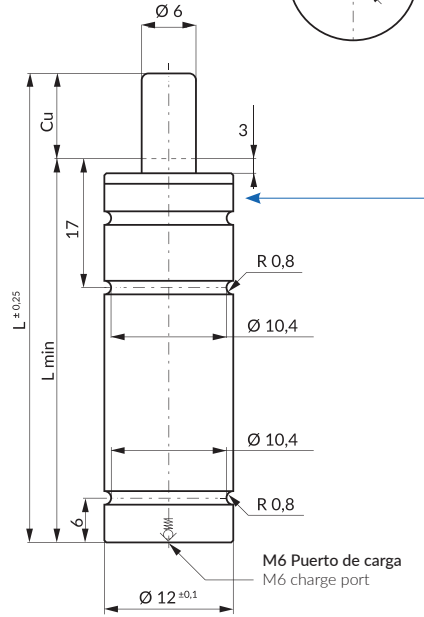
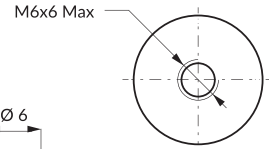
* $F1_i$ =
Isothermal end
force at 100% Cu

* $F1_p$ =
Polytropic end
force at 100% Cu

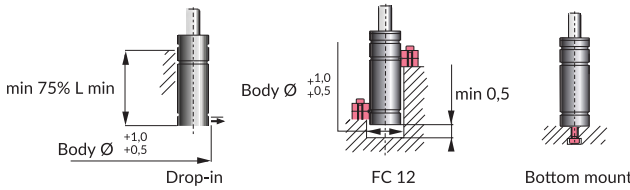
Linkable with hoses



Assembly recommendation



M6 Puerto de carga
M6 charge port



⚠ Only for SW (Secondary Wiper). Not for mounting.

		ΔP	P max	P min	S	SPM	Max Speed	Maintenance kit
N ₂	0 - 80°C	$\pm 0,33 \% / ^\circ C$	180 bar	20 bar	0,28 cm ²	~100 -150 (at 20°)	1,8 m/s	Not available

Code	Cu	L	L min	FO	F1 _i	V0	
	mm	mm	mm	Initial force daN	End force* daN	cm ³	
M 50-007	7	56	49	1,24 x FO	1,41 x FO	1,2	0,03
M 50-010	10	62	52	1,30 x FO	1,50 x FO	1,4	0,03
M 50-013	12,7	67,4	54,7	1,35 x FO	1,57 x FO	1,6	0,03
M 50-015	15	72	57	1,38 x FO	1,62 x FO	1,8	0,03
M 50-019	19	80	61	1,42 x FO	1,69 x FO	2,1	0,03
M 50-025	25	92	67	1,47 x FO	1,77 x FO	2,5	0,03
M 50-038	38	118	80	1,53 x FO	1,88 x FO	3,5	0,04
M 50-050	50	142	92	1,57 x FO	1,95 x FO	4,4	0,05
M 50-063	63,5	172	108,5	1,57 x FO	1,93 x FO	5,6	0,06
M 50-075	75	195	120	1,59 x FO	1,97 x FO	6,5	0,06
M 50-080	80	205	125	1,59 x FO	1,98 x FO	6,9	0,07
M 50-100	100	245	145	1,62 x FO	2,02 x FO	8,4	0,08
M 50-125	125	295	170	1,64 x FO	2,06 x FO	10,2	0,09

P = Nominal charging pressure

Force color code	P	FO
	bar	Initial force ± 5% +20°C daN
GR	45	13
BU	90	25
RD	135	38
YW	180	50
BK	20-180	6-50

How to order: Code + Force color code