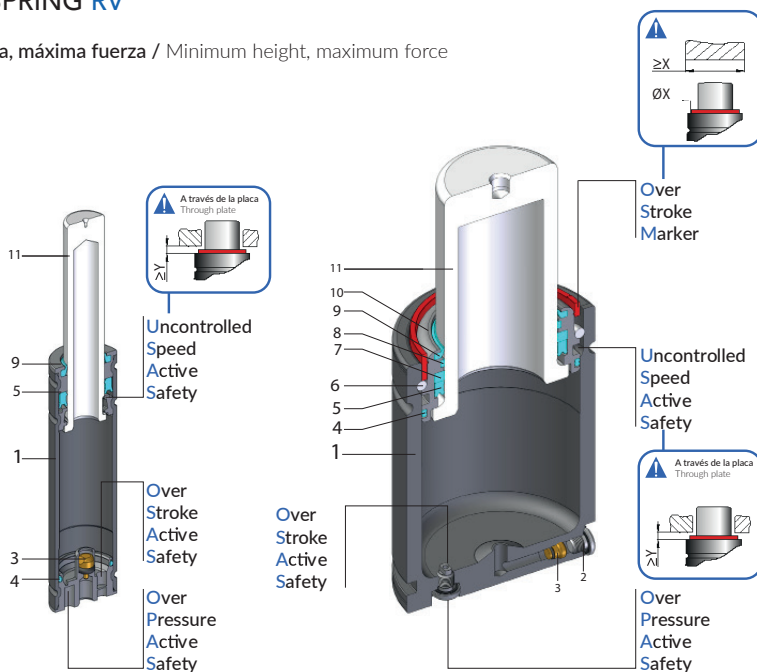


CILINDRO RV GAS SPRING RV

Mínima altura, máxima fuerza / Minimum height, maximum force



RV 170 - RV 320

RV 350 ÷ RV 20000

Standard: ISO, VDI

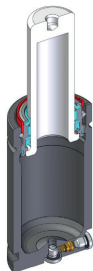
Model	Body \varnothing	Stroke Cu	Initial force F0	OSAS	USAS	OPAS	SKUDO	SW (optional)
	mm	mm	daN					
RV 170	19	7 - 125	170	•	•	•	-	•
RV 320	25	7 - 125	320	•	•	•	-	•
RV350	32	10 - 125	360	•	•	•	-	•
RV 500	38	10 - 125	470	•	•	•	-	•
RV 750	45	10 - 125	740	•	•	•	-	•
RV 1000	50	10 - 125	920	•	•	•	-	•
RV 1200	50	10 - 125	1060	•	•	•	-	•
RV 1500	63	10 - 125	1530	•	•	•	-	•
RV 2400	75	10 - 125	2385	•	•	•	-	•
RV 4200	95	16 - 125	4240	•	•	•	-	•
RV 6600	120	16 - 125	6630	•	•	•	-	•
RV 9500	150	19 - 125	9540	•	•	•	-	•
RV 12000	150	19 - 125	11780	•	•	•	-	•
RV 20000	195	19 - 125	19910	•	•	•	-	•

1	Cuerpo / Body
2	Válvula / Valve
3	Tapón / Plug
4	Anillo dual / Dual ring seal
5	Casquillo guía / Guide ring
6	Anillo de retención / Retaining ring

7	Retén / Rod seal
8	Anillo antiextrusión / Back-up ring
9	Rascador / Rod wiper
10	Casquillo / Bush
11	Vástago (niturado) / Rod (nitrited super finished)

CILINDRO RV
GAS SPRING RV

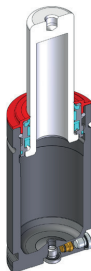
Versiones disponibles / Available versions



Standard code



GAS SPRING



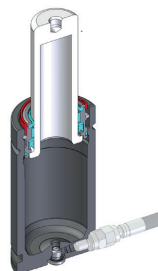
Standard code + W



GAS SPRING
+
Secondary wiper



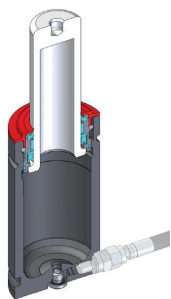
See p. Ct163



Standard code + N



Linkable
See p. Ct157



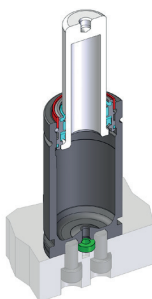
Standard code + N-W



Linkable
+
Secondary wiper



See p. Ct157 + Ct163



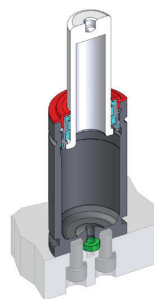
Standard code + E



Easy Manifold



See p. Ct158



CILINDRO RV 350 GAS SPRING RV 350



SW

Active safety

* F_{1i} =
Isothermal end
force at 100%

$Cu * F_{1p}$ =
Polytropic end
force at 100% Cu



OSAS

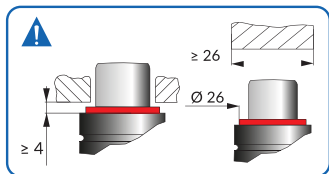


USAS

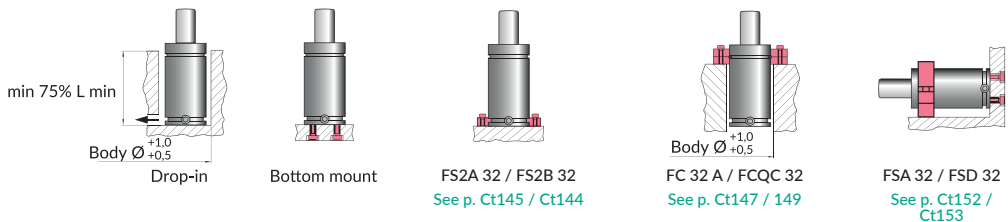
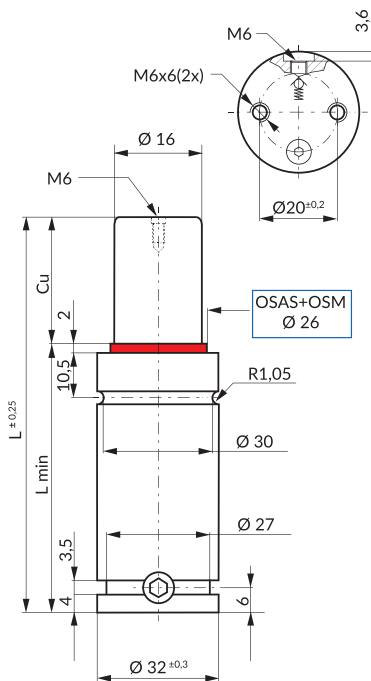


OPAS

OSAS + OSM = **OVER STROKE ACTIVE SAVETY** + **OVER STROKE MARKER**



Assembly recommendation



		ΔP ± 0,33 % / °C	P max 180 bar	P min 20 bar	S 2,01 cm ²	SPM ~20 -100 (at 20°)	Max Speed 1,8 m/s	Maintenance kit Not available
--	--	-----------------------------	------------------	-----------------	---------------------------	-----------------------------	----------------------	----------------------------------

Code	Cu	L	L min	FO Initial force daN	F _{1i} End force* daN	F _{1p} End force* daN	V0 cm ³		PED 2014/68/EU
	mm	mm	mm						
RV 350-010	10	50	40	360 ± 5% 180bar +20°C	531	607	7,7	0,17	•
RV 350-013	13	56	43		544	627	9,5	0,18	•
RV 350-016	16	62	46		554	641	11,2	0,19	•
RV 350-019	19	68	49		561	651	13	0,19	•
RV 350-025	25	80	55		571	665	16,6	0,21	•
RV 350-032	32	94	62		578	676	20,7	0,24	•
RV 350-038	38	106	68		583	683	24,3	0,26	•
RV 350-050	50	130	80		589	691	31,4	0,30	•
RV 350-063	63	156	93		593	697	39,1	0,34	•
RV 350-075	75	180	105		595	701	46,3	0,38	•
RV 350-080	80	190	110		596	702	49,2	0,39	•
RV 350-100	100	230	130		599	706	61,1	0,46	•
RV 350-125	125	280	155	606	717	74,9	0,54	•	

How to order: Code