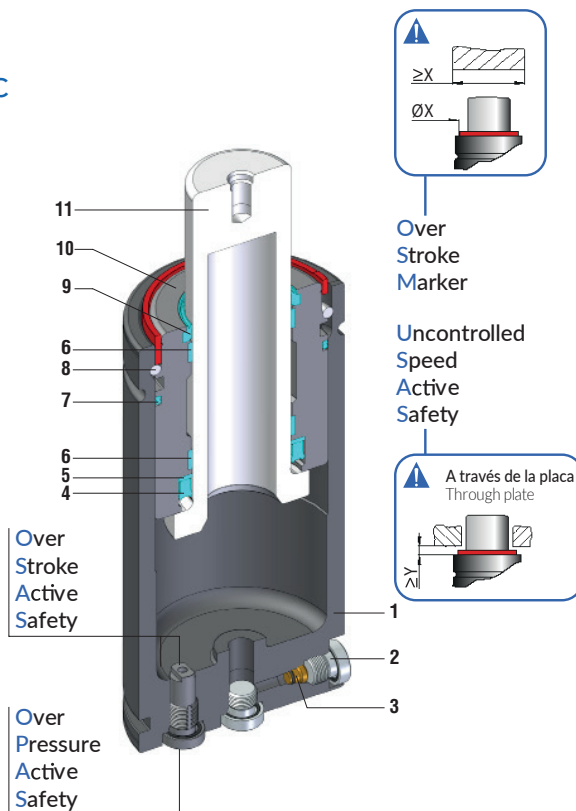







CILINDRO SC GAS SPRING SC

STOCK



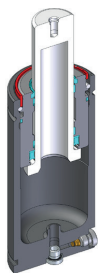
Standard: ISO, VDI

Model	Body Ø	Stroke Cu	Initial force F0	 OSAS	 USAS	 OPAS	 SKUDO	 SW (optional)
	mm	mm	daN					
SC 150	32	10 125	170	•	•	•	-	•
SC 250	38	10 125	260	•	•	•	-	•
SCF 250	M38 X 1,5	10 125	260	•	•	•	-	•
SC 500	45	10 125	470	•	•	•	-	•
SC 750	50	13 125	740	•	•	•	-	•
SC 1500	75	13 125	1530	•	•	•	-	•
SC 3000	95	13 125	2945	•	•	•	-	•
SC 5000	120	25 125	4980	•	•	•	-	•
SC 7500	150	25 125	7540	•	•	•	-	•
SC10000	195	25 125	10600	•	•	•	-	•

1	Cuerpo / Body
2	Válvula / Valve
3	Tapón / Plug
4	Retén / Rod seal
5	Anillo antiextrusión / Back-up ring
6	Anillo guía / Guide ring
7	Anillo dual / Dual ring seal
8	Anillo de retención / Retaining ring
9	Rascador / Rod wiper
10	Casquillo / Bush
11	Vástago (niturado) / Rod (nitrited super finished)

CILINDRO SC
GAS SPRING SC

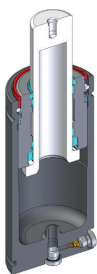
Available versions



Standard code



GAS SPRING



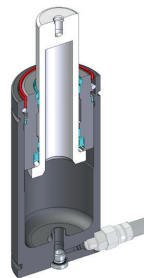
Standard code + W



GAS SPRING
+
Secondary wiper



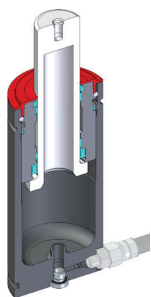
See p. Ct163



Standard code + N



Linkable
See p. Ct157



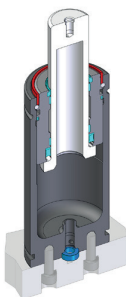
Standard code + N-W



Linkable
+
Secondary wiper



See p. Ct157



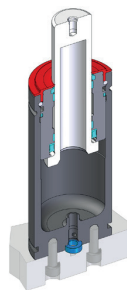
Standard code + E



Easy Manifold



See p. Ct158



Standard code + E-W



Easy Manifold
+
Secondary wiper



See p. Ct158 + Ct163

CILINDRO SC 10000
GAS SPRING SC 10000



SW

Active safety



OSAS



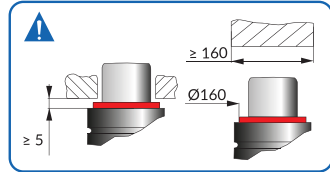
USAS



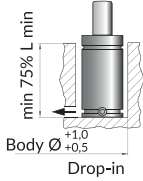
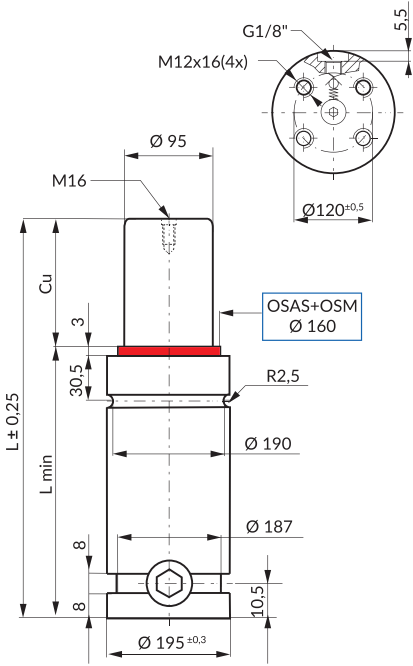
OPAS

* F_{1_i} = Isothermal end force at 100% Cu * F_{1_p} = Polytrophic end force at 100% Cu

OSAS + OSM = OVER STROKE + OVER STROKE ACTIVE SAFETY MARKER



Assembly recommendation

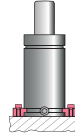


Drop-in



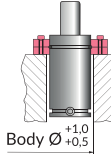
Bottom mount
FB 195 - FBA 195 - FBB 195

See p. Ct139 / Ct140 / Ct141



FS2 195-FT 195
FS2A 195

See p. Ct143 / Ct150 / Ct145



FC 195 A
FCQC 195

See p. Ct147 / Ct149

Standard: ISO 11901-1, VDI 3003

		ΔP ± 0,33 % / °C	P max 150 bar	P min 20 bar	S 70,88 cm ²	SPM ~15-50 (at 20°)	Max Speed 1,8 m/s	Maintenance kit 39BMSCT10000D
--	--	-----------------------------	------------------	-----------------	----------------------------	---------------------------	----------------------	----------------------------------

Code	Cu	L	L min	FO Initial force	F _{1_i} End force*	F _{1_p} End force*	V0		PED 2014/68/EU
	mm	mm	mm	daN	daN	daN	cm ³		
SC 10000 025	25	210	185	10600 ± 5%	12918	14411	1174	33,73	•
SC 10000 038	38	236	198		13498	15277	1482	35,08	•
SC 10000 050	50	260	210		13879	15851	1767	36,32	•
SC 10000 063	63,5	287	223,5		14197	16336	2087	37,72	•
SC 10000 080	80	320	240		14486	16779	2475	39,44	•
SC 10000 100	100	360	260		14742	17174	2952	41,51	•
SC 10000 125	125	410	285		14972	175531	3545	44,11	•
SC 10000 160	160	480	320		15196	17881	4374	47,74	•
SC 10000 200	200	560	360		15415	18222	5288	52,17	•
SC 10000 250	250	660	410		15774	18789	6281	58,87	•
SC 10000 300	300	760	460	16046	19219	7273	65,57	•	

How to order: Code