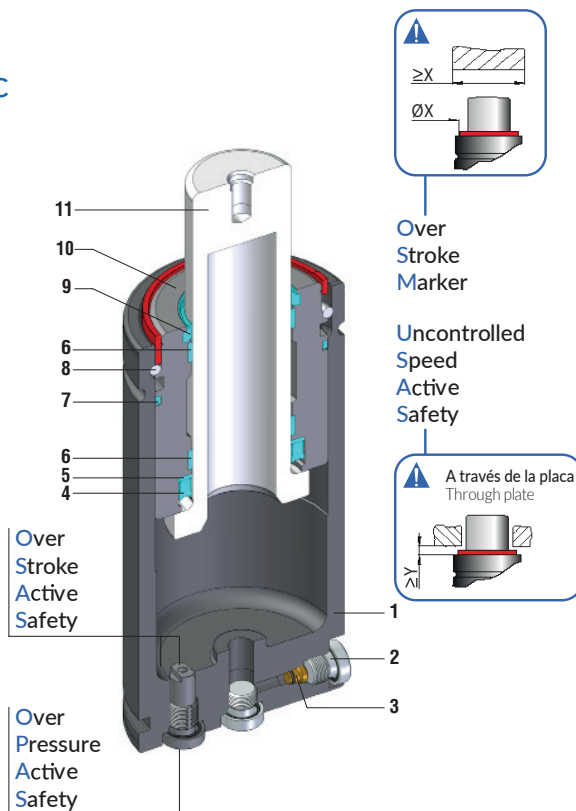







CILINDRO SC GAS SPRING SC

STOCK



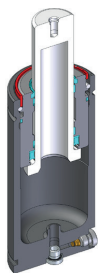
Standard: ISO, VDI

Model	Body Ø	Stroke Cu	Initial force F0	 OSAS	 USAS	 OPAS	 SKUDO	 SW (optional)
	mm	mm	daN					
SC 150	32	10 125	170	•	•	•	-	•
SC 250	38	10 125	260	•	•	•	-	•
SCF 250	M38 X 1,5	10 125	260	•	•	•	-	•
SC 500	45	10 125	470	•	•	•	-	•
SC 750	50	13 125	740	•	•	•	-	•
SC 1500	75	13 125	1530	•	•	•	-	•
SC 3000	95	13 125	2945	•	•	•	-	•
SC 5000	120	25 125	4980	•	•	•	-	•
SC 7500	150	25 125	7540	•	•	•	-	•
SC10000	195	25 125	10600	•	•	•	-	•

1	Cuerpo / Body
2	Válvula / Valve
3	Tapón / Plug
4	Retén / Rod seal
5	Anillo antiextrusión / Back-up ring
6	Anillo guía / Guide ring
7	Anillo dual / Dual ring seal
8	Anillo de retención / Retaining ring
9	Rascador / Rod wiper
10	Casquillo / Bush
11	Vástago (niturado) / Rod (nitrited super finished)

CILINDRO SC
GAS SPRING SC

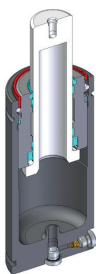
Available versions



Standard code



GAS SPRING



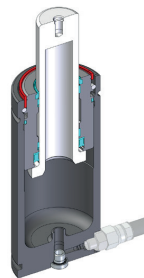
Standard code + W



GAS SPRING
+
Secondary wiper



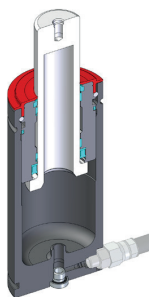
See p. Ct163



Standard code + N



Linkable
See p. Ct157



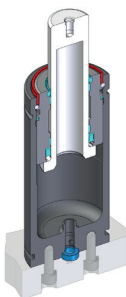
Standard code + N-W



Linkable
+
Secondary wiper



See p. Ct157



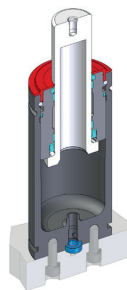
Standard code + E



Easy Manifold



See p. Ct158



Standard code + E-W



Easy Manifold
+
Secondary wiper



See p. Ct158 + Ct163

CILINDRO SC 500 GAS SPRING SC 500



SW

Active safety



OSAS



USAS

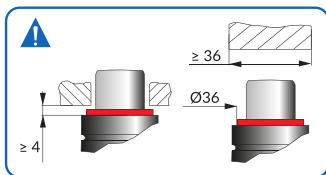


OPAS

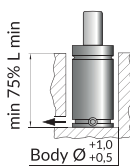
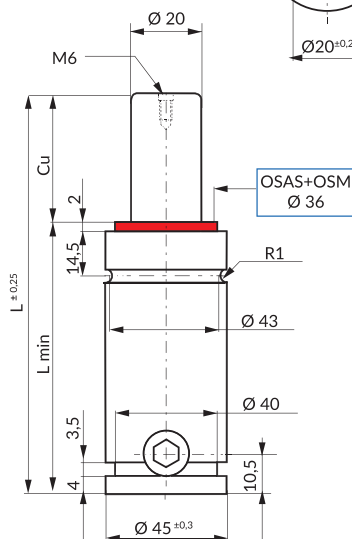
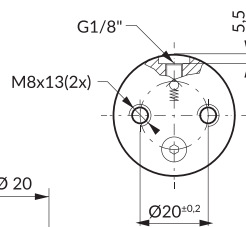
* F_{1i} =
Isothermal end
force at 100% Cu

* F_{1p} =
Polytrophic end
force at 100% Cu

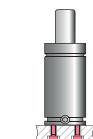
OSAS + OSM = OVER STROKE + OVER STROKE ACTIVE SAFETY MARKER



Assembly recommendation



Drop-in

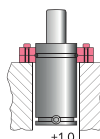


Bottom mount

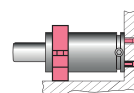
FB 45 - FBA 45 - FBB 45 - FBD 45
See p. Ct139 / Ct140 / Ct 141 / Ct142



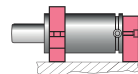
FS2 45 - FT 45
FS2A 45 - FTP 45
See p. Ct143 / Ct150 / Ct145 / Ct151



FC 45 A - FCQC 45
See p. Ct147 / Ct149



FSA 45
FSD 45 - FSE 45
See p. Ct152 / Ct153 / Ct146



FSA 45 + R 50 A
FSE 45 + R 50 A
See p. Ct152 + Ct155
Ct146 + Ct155

Standard: ISO 11901-1, VDI 3003

Code	Cu mm	L mm	L min mm	F0 Initial force daN	S 1,13 cm ²	SPM ~80 -100 (at 20°)	Max Speed 1.8 m/s	Maintenance kit 39BMSC00500D	V0 cm ³	~Kg	PED 2014/88/EU				
												ΔP ± 0,33% / °C	P max 150 bar	P min 20 bar	F_{1i} End force* daN
SC 500 010	10	105	95	150bar	+20°C						•				
SC 500 013	12,7	110,4	97,7									614	701	15,8	0,90
SC 500 025	25	135	110									631	727	18,4	1,00
SC 500 038	38	161	123									675	794	30,2	1,09
SC 500 050	50	185	135									696	828	42,7	1,20
SC 500 063	63,5	212	148,5									708	847	54,2	1,29
SC 500 080	80	245	165									716	860	67,2	1,38
SC 500 100	100	285	185									723	871	83,1	1,50
SC 500 125	125	335	210									729	880	102,3	1,64
SC 500 160	160	405	245									734	888	126,4	1,85
SC 500 200	200	485	285	738	895	160,1	2,10								
				741	900	198,6	2,36	•							

How to order: Code