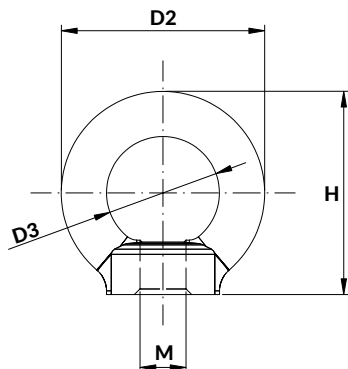







CÁNCAMO HEMBRA CEHF LIFTING BRACKET CEHF

STOCK



CE 2006/42/CE
Standard: DIN 582 - Steel grade 80

M	D2	D3	H	WEIGHT (kg)
M6	28	20	36	0,07
M8	36	20	36	0,07
M10	45	25	45	0,11
M12	54	30	53	0,18
M16	63	35	62	0,26
M20	72	40	71	0,40
M24	90	50	90	0,75
M30	108	60	109	1,40
M36	126	70	128	2,20
M42	144	80	147	3,10
M48	166	90	168	5

Reference	0°	0-45°	45-60°	0-45°	45-60°
	 1 piece	 2 pieces	 2 pieces	 3-4 pieces	 3-4 pieces
MAX. WORKING LOAD (t)					
M6	0,40	0,14	0,10	0,21	0,15
M8	0,80	0,28	0,20	0,42	0,30
M10	1	0,35	0,25	0,52	0,37
M12	2	0,70	0,50	1,05	0,75
M16	4	1,40	1	2,10	1,50
M20	6	2,10	1,50	3,15	2,25
M24	8	2,80	2	4,20	3,
M30	12	4,20	3	6,30	4,5
M36	16	5,60	4	8,40	6
M42	24	8,40	6	12,60	9
M48	32	11,20	8	16,80	12

How to order: CEHF + M

ROYME