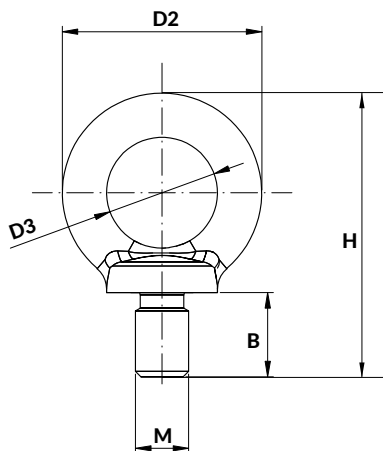





CÁNCAMO MACHO CEMF LIFTING BRACKET CEMF

STOCK



CE 2006/42/CE
Standard: DIN 580 - Steel grade 80

M	D2	B	D3	H	WEIGHT (kg)
M6	28	13	16	42	0,04
M8	36	15	20	51	0,05
M10	45	18	25	63	0,11
M12	54	22	30	75	0,19
M16	63	28	35	88	0,29
M20	72	30	40	101	0,50
M24	90	38	50	128	0,95
M30	108	45	60	154	1,76
M36	126	55	70	183	3,70
M42	144	65	80	212	4,20
M48	166	70	90	238	6,35

Reference	0°	0-45°	45-60°	0-45°	45-60°
	 1 piece	 2 pieces	 3-4 pieces		
MAX. WORKING LOAD (t)					
M6	0,40	0,14	0,10	0,21	0,15
M8	0,80	0,28	0,20	0,42	0,30
M10	1	0,35	0,25	0,52	0,37
M12	2	0,70	0,50	1,05	0,75
M16	4	1,40	1	2,10	1,50
M20	6	2,10	1,50	3,15	2,25
M24	8	2,80	2	4,20	3
M30	12	4,20	3	6,30	4,5
M36	16	5,60	4	8,40	6
M42	24	8,40	6	12,60	9
M48	32	11,20	8	16,80	12

How to order: CEMF + M