

OREJETA DE TRANSPORTE OTF LIFTING BRACKET WITH PIN OTF

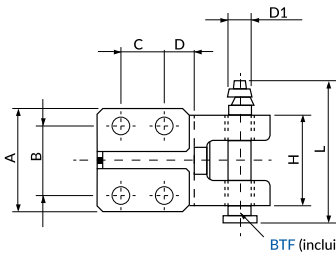
Material: CK45 - 800±1000 N/mm²



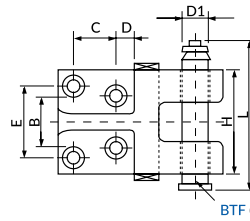
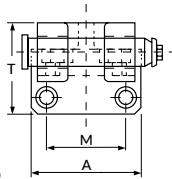
i Se recomienda montaje con tornillo TCC
We recommend assembly with screw TCC

Form A

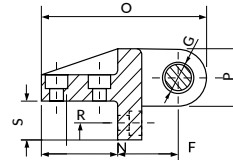
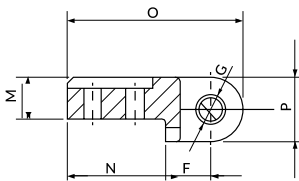
Form B



BTf (incluido / included)



BTf (incluido / included)



CE 2006/42/CE

Carga Máx. Max. Load Kg	Peso Máx. Matriz Max. Die weight Kg	A	B	C	D	D1	E	F	G	H	L	M	N	O	P	R	S	T	Forma Form	Tornillo Screw
600	1200	80	50	40	22,5	15,6	-	39	16	70	102,5	32	80	145	52	-	-	-	A	M 12 x 45
1000	2000	90	60	40	27,5	20,6	-	42	21	79	113,5	36	90	160	56	-	-	-	A	M 16 x 55
2000	4000	100	65	65	32,5	25,6	-	60	26	90	128,5	50	120	215	70	-	-	-	A	M 20 x 80
4000	8000	135	56	60	20	33	84	85	34	125	166,5	96	100	221	72	30	50	111	B	M 16 x 45
7000	14000	180	80	70	30	43	110	100	44	160	210,5	130	125	270	90	35	60	140	B	M 20 x 60

How to order: OTF + Max. Load