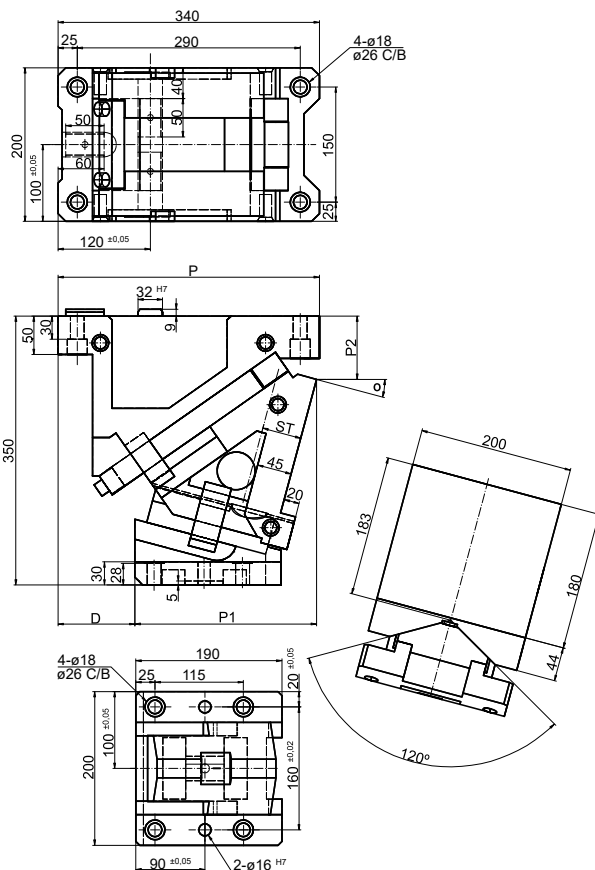


CARROS AÉREOS CSBC AERIAL CAM UNITS CSBC



CSBC 200

Mounting Method

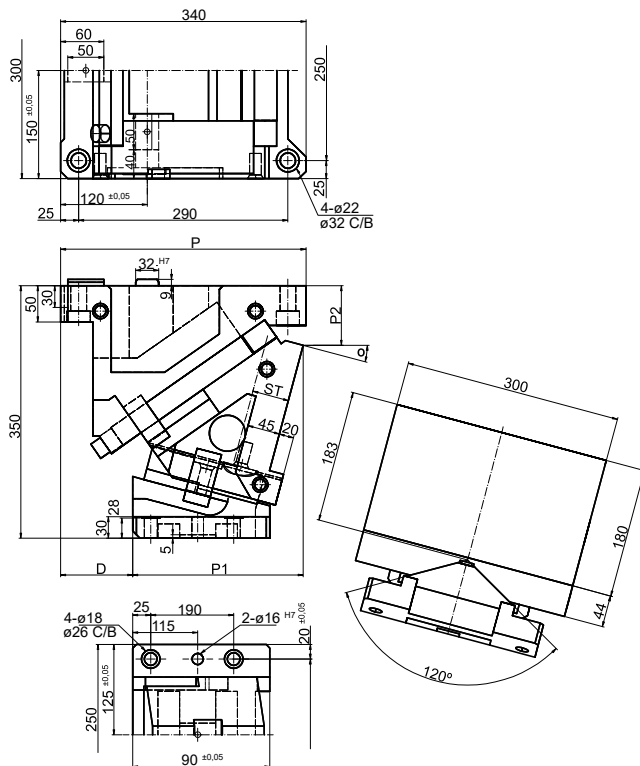
K: Key width 32 mm assemble

Code	W Working Face mm	θ Working Angle °	ST Stroke mm	P mm	P1 mm	P2 mm	D mm	Max Work Force kN	Gas Spring	
									Max Work Force kN	Extraction Force kN
CSBC.200x0	200	0	38,6	313	175	58	138	302	11,42	
CSBC.200x5	200	5	42,6	320,64	195,64	64,34	125	302	11,42	
CSBC.200x10	200	10	46,7	331,08	216,08	72,47	115	302	11,42	
CSBC.200x15	200	15	50,9	336,17	236,17	83,37	100	302	11,42	
CSBC.200x20	200	20	55,3	340,76	255,76	94	85	302	11,42	
CSBC.200x25	200	25	60	344,69	274,69	102,32	70	302	11,42	
CSBC.200x30	200	30	65,1	347,83	292,83	112,25	55	302	11,42	
CSBC.200x35	200	35	70,8	355,03	310,03	123,73	45	302	11,42	
CSBC.200x40	200	40	77,1	351,17	326,17	136,66	25	302	11,42	
CSBC.200x45	200	45	84,5	356,12	341,12	150,95	15	302	11,42	
CSBC.200x50	200	50	93,3	348,77	354,77	161,49	-6	302	11,42	
CSBC.200x55	200	55	104,6	352,01	367,01	178,84	-15	302	8,88	
CSBC.200x60	200	60	120	332,75	377,75	195,83	-45	302	8,88	

Continue next page...

How to order: Code + W x θ

CARROS AÉREOS CSBC AERIAL CAM UNITS CSBC



CSBC 300

Mounting Method

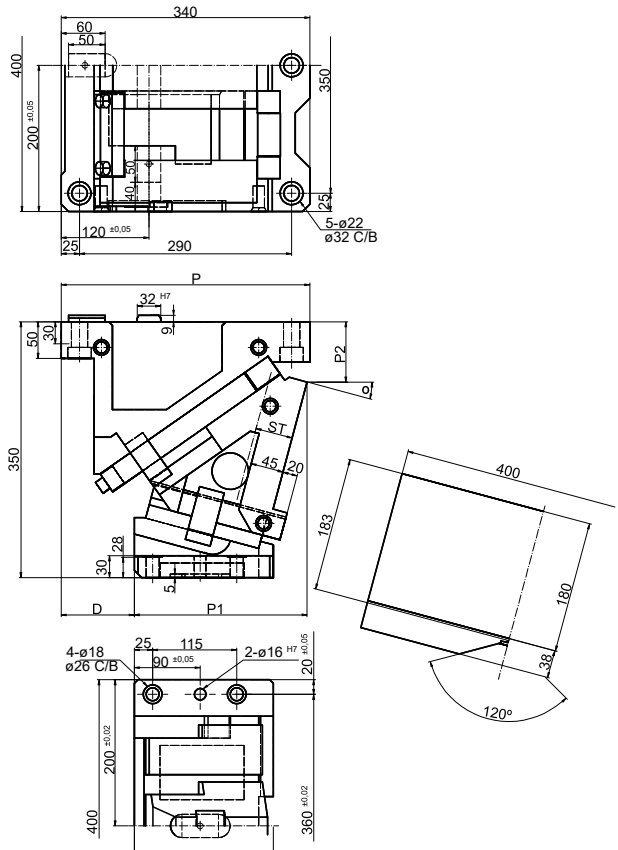
K: Key width 32 mm assemble

Code	W Working Face mm	θ Working Angle °	ST Stroke mm	P mm	P1 mm	P2 mm	D mm	Gas Spring	
								Max Work Force kN	Extraction Force kN
CSBC.300x0	300	0	38,6	313	175	58	138	411	22,83
CSBC.300x5	300	5	42,6	320,64	195,64	64,34	125	411	22,83
CSBC.300x10	300	10	46,7	331,08	216,08	72,47	115	411	22,83
CSBC.300x15	300	15	50,9	336,17	236,17	83,37	100	411	22,83
CSBC.300x20	300	20	55,3	340,76	255,76	94	85	411	22,83
CSBC.300x25	300	25	60	344,69	274,69	102,32	70	411	22,83
CSBC.300x30	300	30	65,1	347,83	292,83	112,25	55	411	22,83
CSBC.300x35	300	35	70,8	355,03	310,03	123,73	45	411	22,83
CSBC.300x40	300	40	77,1	351,17	326,17	136,66	25	411	22,83
CSBC.300x45	300	45	84,5	356,12	341,12	150,95	15	411	22,83
CSBC.300x50	300	50	93,3	348,77	354,77	161,49	-6	411	22,83
CSBC.300x55	300	55	104,6	352,01	367,01	178,84	-15	411	17,76
CSBC.300x60	300	60	120	332,75	377,75	195,83	-45	411	17,76

Continue next page...

How to order: Code + W x θ

CARROS AÉREOS CSBC
AERIAL CAM UNITS CSBC



CSBC 400

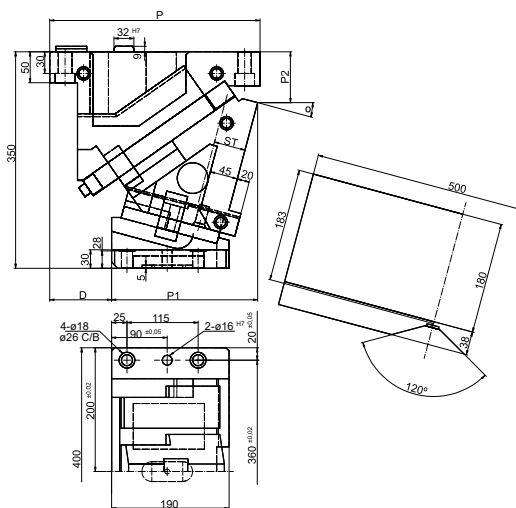
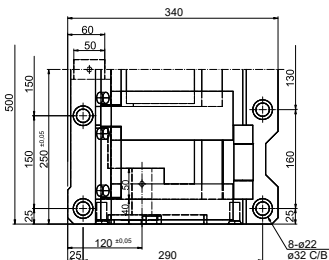
Mounting Method
K: Key width 32 mm assemble

Code	W Working Face mm	θ Working Angle °	ST Stroke mm	P mm	P1 mm	P2 mm	D mm	Max Work Force kN	Gas Spring
									Extraction Force kN
CSBC.400x0	400	0	38,6	313	175	58	138	526	22,83
CSBC.400x5	400	5	42,6	320,64	195,64	64,34	125	526	22,83
CSBC.400x10	400	10	46,7	331,08	216,08	72,47	115	526	22,83
CSBC.400x15	400	15	50,9	336,17	236,17	83,37	100	526	22,83
CSBC.400x20	400	20	55,3	340,76	255,76	94	85	526	22,83
CSBC.400x25	400	25	60	344,69	274,69	102,32	70	526	22,83
CSBC.400x30	400	30	65,1	347,83	292,83	112,25	55	526	22,83
CSBC.400x35	400	35	70,8	355,03	310,03	123,73	45	526	22,83
CSBC.400x40	400	40	77,1	351,17	326,17	136,66	25	526	22,83
CSBC.400x45	400	45	84,5	356,12	341,12	150,95	15	526	22,83
CSBC.400x50	400	50	93,3	348,77	354,77	161,49	-6	526	22,83
CSBC.400x55	400	55	104,6	352,01	367,01	178,84	-15	526	17,76
CSBC.400x60	400	60	120	332,75	377,75	195,83	-45	526	17,76

Continue next page...

How to order: Code + W x θ

CARROS AÉREOS CSBC
AERIAL CAM UNITS CSBC



CSBC 500

Mounting Method

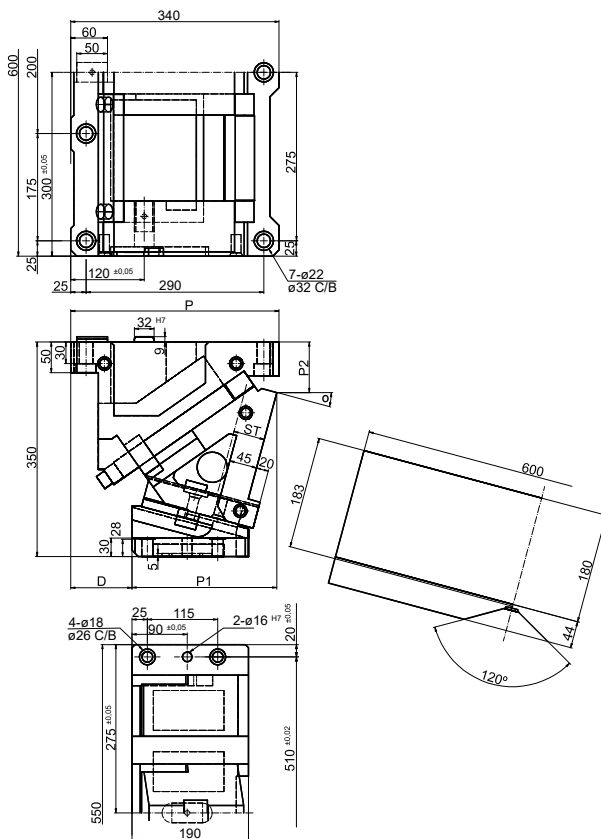
K: Key width 32 mm assemble

Code	W Working Face mm	θ Working Angle °	ST Stroke mm	P mm	P1 mm	P2 mm	D mm	Gas Spring	
								Max Work Force kN	Extraction Force kN
CSBC.500x0	500	0	38,6	313	175	58	138	743	34,25
CSBC.500x5	500	5	42,6	320,64	195,64	64,34	125	743	34,25
CSBC.500x10	500	10	46,7	331,08	216,08	72,47	115	743	34,25
CSBC.500x15	500	15	50,9	336,17	236,17	83,37	100	743	34,25
CSBC.500x20	500	20	55,3	340,76	255,76	94	85	743	34,25
CSBC.500x25	500	25	60	344,69	274,69	102,32	70	743	34,25
CSBC.500x30	500	30	65,1	347,83	292,83	112,25	55	743	34,25
CSBC.500x35	500	35	70,8	355,03	310,03	123,73	45	743	34,25
CSBC.500x40	500	40	77,1	351,17	326,17	136,66	25	743	34,25
CSBC.500x45	500	45	84,5	356,12	341,12	150,95	15	743	34,25
CSBC.500x50	500	50	93,3	348,77	354,77	161,49	-6	743	34,25
CSBC.500x55	500	55	104,6	352,01	367,01	178,84	-15	743	26,64
CSBC.500x60	500	60	120	332,75	377,75	195,83	-45	743	26,64

Continue next page...

How to order: Code + W x θ

CARROS AÉREOS CSBC AERIAL CAM UNITS CSBC



CSBC 600

Mounting Method

K: Key width 32 mm assemble

Code	W Working Face mm	θ Working Angle °	ST Stroke mm	P mm	P1 mm	P2 mm	D mm	Max Work Force kN	Gas Spring
									Extraction Force kN
CSBC.600x0	600	0	38,6	313	175	58	138	865	45,67
CSBC.600x5	600	5	42,6	320,64	195,64	64,34	125	865	45,67
CSBC.600x10	600	10	46,7	331,08	216,08	72,47	115	865	45,67
CSBC.600x15	600	15	50,9	336,17	236,17	83,37	100	865	45,67
CSBC.600x20	600	20	55,3	340,76	255,76	94	85	865	45,67
CSBC.600x25	600	25	60	344,69	274,69	102,32	70	865	45,67
CSBC.600x30	600	30	65,1	347,83	292,83	112,25	55	865	45,67
CSBC.600x35	600	35	70,8	355,03	310,03	123,73	45	865	45,67
CSBC.600x40	600	40	77,1	351,17	326,17	136,66	25	865	45,67
CSBC.600x45	600	45	84,5	356,12	341,12	150,95	15	865	45,67
CSBC.600x50	600	50	93,3	348,77	354,77	161,49	-6	865	45,67
CSBC.600x55	600	55	104,6	352,01	367,01	178,84	-15	865	35,52
CSBC.600x60	600	60	120	332,75	377,75	195,83	-45	865	35,52

How to order: Code + W x θ

CARROS DE BASE
DIE MOUNTED CAM UNITS

CIDM



CIOM/CIOC

