

## CARROS AÉREOS CSCM AERIAL CAM UNITS CSCM



### CSCM 50

#### Mounting Method

Blank: Drawin Shape.

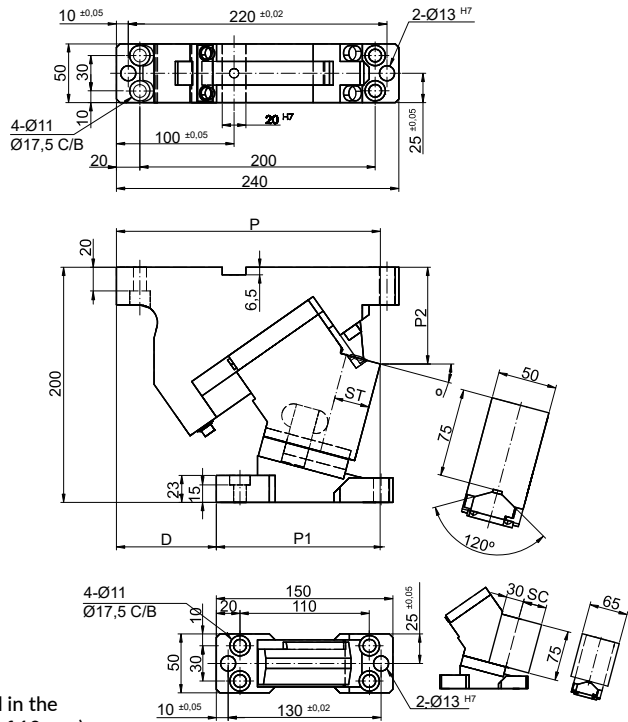
K: Key width 20 mm assemble.

#### Working Face (option)

Blank: as drawing.

SC: The mount surface is extended forward in the range of from 10 to 60 mm (at increments of 10 mm).

WC: The mount width is changed to 65 mm.

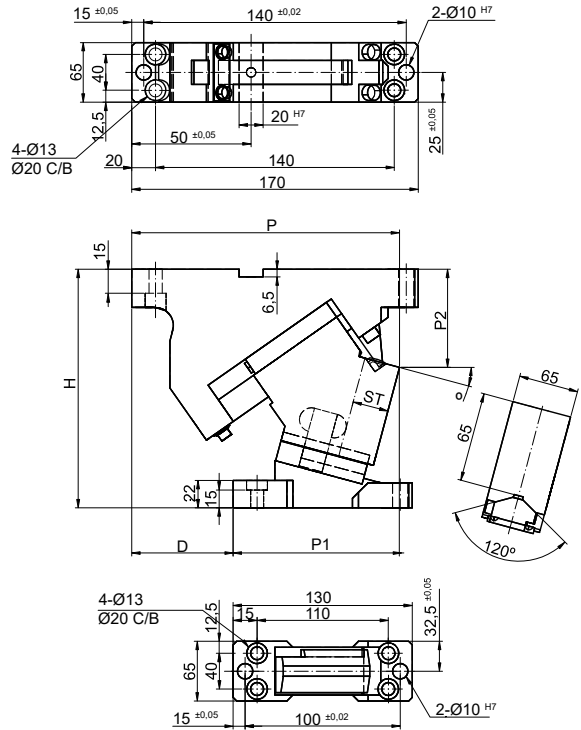


Code	W Working Face	ST Stroke	θ Angle	P	P1	P2	D	H	K	Max. Work Force	Spring	
											mm	°
CSCM.50x0	50	30,2	0	225	118	77,5	107	200	-	41	0,66	
CSCM.50x5	50	30,5	5	226,91	126,91	78,33	100	200	-	41	0,61	
CSCM.50x10	50	30,3	10	223,72	133,72	79,93	90	200	-	41	0,56	
CSCM.50x15	50	30,5	15	224,36	139,36	82,29	85	200	-	41	0,71	
CSCM.50x20	50	30,4	20	220,76	150,76	85,39	70	200	-	41	0,66	
CSCM.50x25	50	30	25	215,85	157,85	89,22	58	200	-	41	0,66	
CSCM.50x30	50	32,6	30	213,58	158,58	94,73	55	200	-	41	0,66	
CSCM.50x35	50	35,4	35	204,89	169,89	96,9	35	200	-	41	0,66	
CSCM.50x40	50	38,6	40	206,72	176,72	102,69	30	200	-	41	0,66	
CSCM.50x45	50	42,3	45	202,01	182,01	103,06	20	200	-	41	0,66	
CSCM.50x50	50	46,7	50	195,73	185,73	105,94	10	200	-	41	0,66	
CSCM.50x55	50	52,1	55	189,83	189,83	116,3	0	200	-	41	0,59	
CSCM.50x60	50	59,1	60	179,27	194,27	125,08	-15	200	-	41	0,52	
CSCM.50x65	50	58,3	65	176,6	208,6	126,87	-32	200	-	41	0,38	
CSCM.50x70	50	57,6	70	177	215	135,83	-38	200	-	41	0,35	
CSCM.65x0	65	15	0	170	110	53	60	180	-	42	0,94	

Continue next page...

How to order: Code + W x θ

## CARROS AÉREOS CSCM AERIAL CAM UNITS CSCM



### CSCM 65

#### Mounting Method

Blank: Drawin Shape.

K: Key width 20 mm assemble.

#### Working Face (option)

Blank: as drawing.

SC: The mount surface is extended forward in the range of from 10 to 60 mm (at increments of 10 mm).

Code	W Working Face	ST Stroke	° Angle	P	P1	P2	D	H	K	Max. Work Force	Spring	
											kN	mm
CSCM.65x5	65	15,1	5	171,41	116,41	60,27	55	180	-	42	0,89	
CSCM.65x10	65	15,2	10	177,16	177,16	63,06	55	180	-	42	0,91	
CSCM.65x15	65	15,5	15	177,2	177,2	66,33	50	180	-	42	0,87	
CSCM.65x20	65	16,5	20	176,51	176,51	70,01	40	180	-	42	0,87	
CSCM.65x25	65	17,1	25	172,94	172,94	75,64	35	180	-	42	0,79	
CSCM.65x30	65	18,5	30	177,78	177,78	78,32	30	180	-	42	0,85	
CSCM.65x35	65	19,6	35	173,29	173,29	83,25	20	180	-	42	0,77	
CSCM.65x40	65	21,5	40	170,78	170,78	82,44	10	180	-	42	0,85	
CSCM.65x45	65	23,3	45	165,5	165,5	86,51	2,5	180	-	42	0,77	
CSCM.65x50	65	26,5	50	165,41	165,41	96,79	-5	190	-	42	0,79	
CSCM.65x55	65	29,7	55	159,51	159,51	99,89	-10	190	-	42	0,07	
CSCM.65x60	65	35	60	156,68	156,68	120,78	-20	210	-	42	0,64	
CSCM.65x65	65	41,4	65	150,33	150,33	122,8	-25	210	-	42	0,54	
CSCM.65x70	65	51,1	70	146,45	146,45	131,68	-32	210	-	42	0,44	
CSCM.80x0	80	32,1	0	260	160	99	100	-	130	83	1,09	

Continue next page...

How to order: Code + W x Ø

## CARROS AÉREOS CSCM AERIAL CAM UNITS CSCM



### CSCM 80

#### Mounting Method

Blank: Drawin Shape.

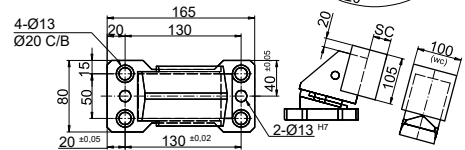
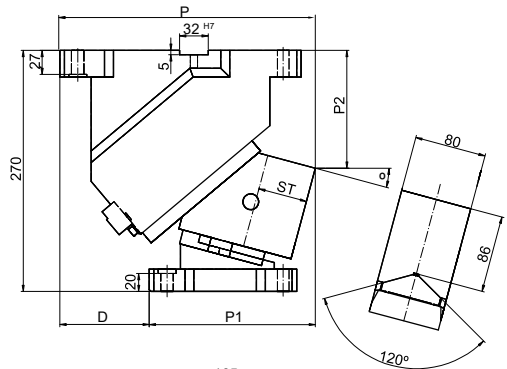
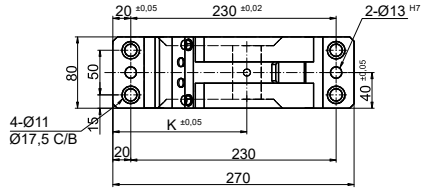
K: Key width 32 mm assemble.

#### Working Face (option)

Blank: as drawing.

SC: The mount surface is extended forward in the range of from 10 to 60 mm (at increments of 10 mm).

WC: The mount width is changed to 100 mm.



Code	W Working Face	ST Stroke	° Angle	P	P1	P2	D	H	K	Max. Work Force	Spring	
											kN	mm
CSCM.80x5	80	38,4	5	272,93	172,93	109,39	100	-	150	83	1,2	
CSCM.80x10	80	38,9	10	279,92	179,92	120,43	100	-	150	83	1,09	
CSCM.80x15	80	39,7	15	285,93	185,93	132,04	100	-	150	83	0,97	
CSCM.80x20	80	46,1	20	285,9	195,9	129,12	90	-	170	83	1,09	
CSCM.80x25	80	17,8	25	289,8	199,8	141,6	90	-	170	83	0,97	
CSCM.80x30	80	54,3	30	282,59	207,59	134,36	75	-	170	83	1,09	
CSCM.80x35	80	57,4	35	284,27	209,27	147,32	75	-	170	83	0,97	
CSCM.80x40	80	64,3	40	274,8	214,8	140,38	60	-	170	83	1,09	
CSCM.80x45	80	69,6	45	274,2	214,2	153,44	60	-	170	83	0,97	
CSCM.80x50	80	77,8	50	262,46	227,46	151,39	35	-	170	83	1,09	
CSCM.80x55	80	87,2	55	259,6	224,6	164,14	35	-	170	83	0,97	
CSCM.80x60	80	98,5	60	240,64	240,64	176,59	0	-	170	83	0,85	
CSCM.80x65	80	81,6	65	235,61	240,61	188,65	-5	-	170	83	0,65	
CSCM.80x70	80	86,4	70	227,83	237,83	195,53	-10	-	170	83	0,58	
CSCM.150x0	150	32,1	0	280	160	85	120	-	100	140	4,18	
CSCM.150x5	150	32,3	5	288,26	173,26	95,84	115	-	100	140	3,73	

Continue next page...

How to order: Code + W x Ø

