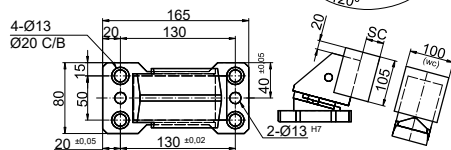
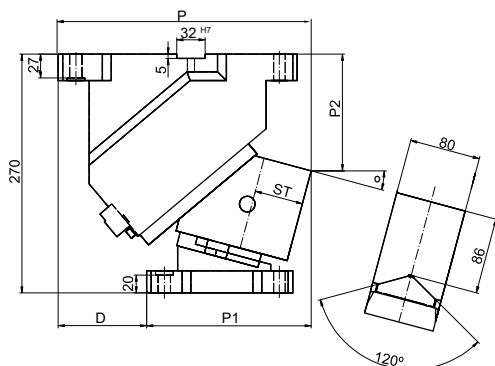
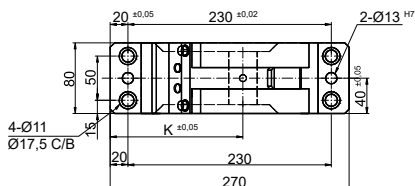


CARROS AÉREOS CSFM AERIAL CAM UNITS CSFM



CSFM 80

Mounting Method

Blank: Drawin Shape

K: Key width 32mm assemble

Working Face (option)

Blank: as drawing

SC: The mount surface is extended forward in the range of from 10 to 60 mm (at increments of 10 mm)

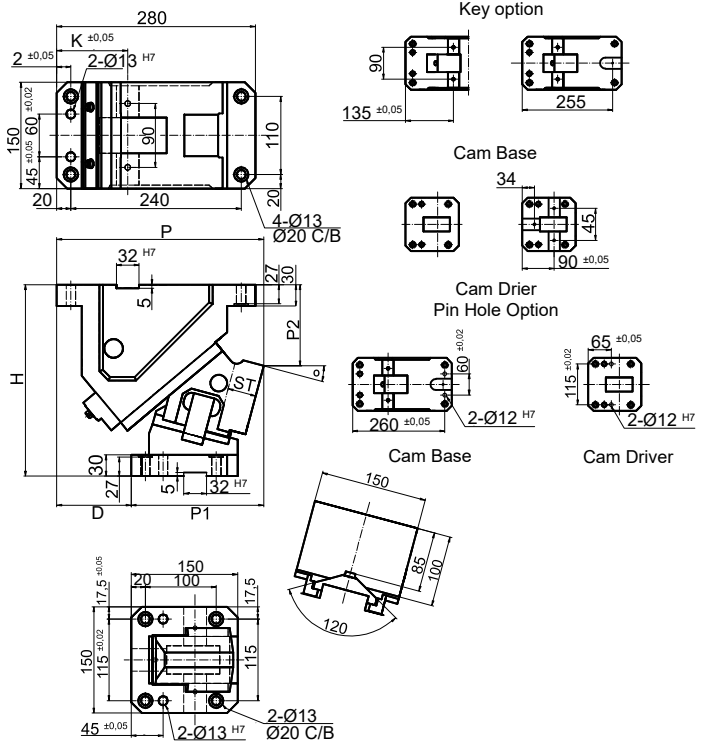
WC: The mount width is changed to 100 mm.

Code	W Working Face	ST Stroke	ø Angle	P	P1	P2	D	H	Max. Work Force	Spring	
										KN	mm
CSFM.80x0	80	32,1	0	260	160	99	100	-	116	2,47	
CSFM.80x5	80	38,4	5	272,93	172,93	109,39	100	-	116	2,72	
CSFM.80x10	80	38,9	10	279,92	179,92	120,43	100	-	116	2,47	
CSFM.80x15	80	39,7	15	285,93	185,93	132,04	100	-	116	2,21	
CSFM.80x20	80	46,1	20	285,9	195,9	129,12	90	-	116	2,47	
CSFM.80x25	80	17,8	25	289,8	199,8	141,6	90	-	116	2,21	
CSFM.80x30	80	54,3	30	282,59	207,59	134,36	75	-	116	2,47	
CSFM.80x35	80	57,4	35	284,27	209,27	147,32	75	-	116	2,21	
CSFM.80x40	80	64,3	40	274,8	214,8	140,38	60	-	116	2,47	
CSFM.80x45	80	69,6	45	274,2	214,2	153,44	60	-	116	2,21	
CSFM.80x50	80	77,8	50	262,46	227,46	151,39	35	-	116	2,47	
CSFM.80x55	80	87,2	55	259,6	224,6	164,14	35	-	116	2,21	
CSFM.80x60	80	98,5	60	240,64	240,64	176,59	0	-	116	1,92	
CSFM.80x65	80	81,6	65	235,61	240,61	188,65	-5	-	116	1,59	
CSFM.80x70	80	86,4	70	227,83	237,83	195,53	-10	-	116	1,26	

Continue next page...

How to order: Code + W x Ø

CARROS AÉREOS CSFM
AERIAL CAM UNITS CSFM



CSFM 150

Mounting Method
 Mounting Method:
 Blank: Drawin Shape
 K: Key width 32mm assemble
 TK: Center key, Cross key assemble
 N12: Dowel pin finished hole for Ø12

Code	W Working Face	ST Stroke	ø Angle	P	P1	P2	D	H	Max. Work Force	Spring	
										Extraction Force	Force
	KN	mm	°	mm	mm	mm	mm	mm	kN	kN	
CSFM.150x0	150	32.1	0	280	160	85	120	100	192	6.47	
CSFM.150x5	150	32.3	5	288,26	173,26	95,84	115	100	192	7.25	
CSFM.150x10	150	38,9	10	285,54	180,54	102,36	105	100	192	6.47	
CSFM.150x15	150	39,7	15	291,79	186,79	114,47	105	100	192	7.25	
CSFM.150x20	150	46,1	20	286,97	196,97	112,07	90	135	192	6.47	
CSFM.150x25	150	47,8	25	291,02	201,02	135,08	90	135	192	7.25	
CSFM.150x30	150	54,3	30	283,92	213,92	138,4	70	135	192	6.47	
CSFM.150x35	150	57,4	35	285,66	215,66	151,91	70	135	192	7.25	
CSFM.150x40	150	64,3	40	276,2	231,2	155,53	45	170	192	6.47	
CSFM.150x45	150	69,6	45	275,56	230,56	169,14	45	170	192	7.25	
CSFM.150x50	150	77,8	50	263,74	238,74	167,65	25	170	192	6.47	
CSFM.150x55	150	87,2	55	260,74	235,74	180,94	25	170	192	7.25	
CSFM.150x60	150	98,5	60	246,6	246,6	193,92	0	170	192	5,64	
CSFM.150x65	150	93,2	65	241,35	241,35	206,48	0	170	192	4,64	
CSFM.150x70	150	86,4	70	240,01	245,01	218,56	-5	170	192	3,66	

How to order: Code + W x ø