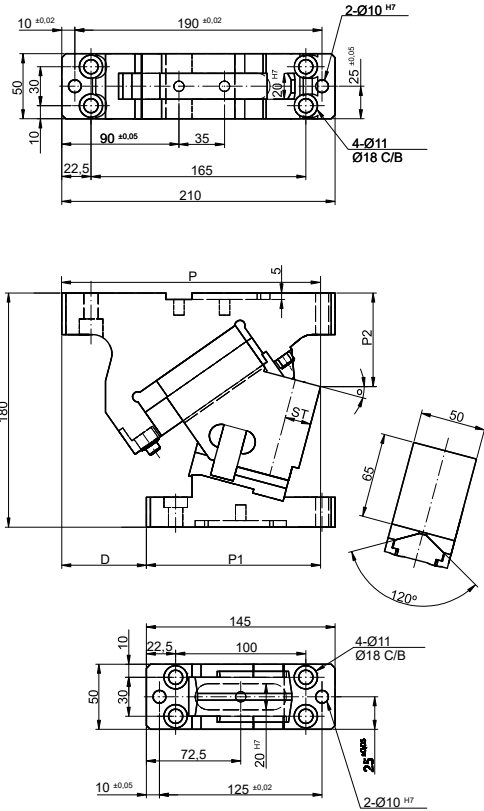


**CARROS AÉREOS CSGC**  
AERIAL CAM UNITS CSGC



**CSGC 50**

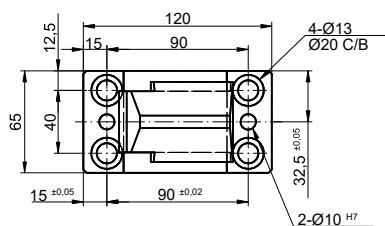
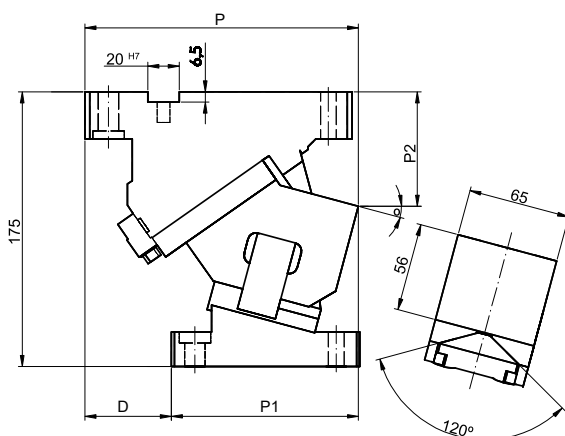
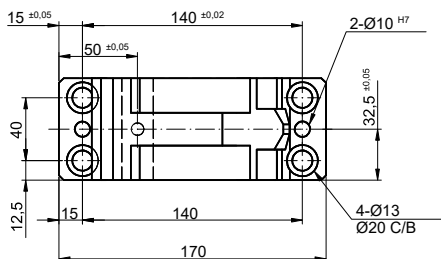
**Mounting Method**  
Blank: Drawing shape  
K: Key with 20 mm assemble

Code	W Working Face	ST Stroke	θ Angle	P	P1	P2	P3	D	K	Gas Spring	
										Max. Work Force	Extraction Force
	KN	mm	°	mm	mm	mm	mm	mm	mm	kN	N
CSGC.50x0	50	15	0	195	115	67,5	80	-	29,4	60	1,72
CSGC.50x5	50	15,6	5	198,04	123,04	68,29	75	-	29,4	60	1,67
CSGC.50x10	50	15,6	10	195,99	130,99	69,77	65	-	29,4	60	1,6
CSGC.50x15	50	17	15	198,77	133,77	71,95	65	-	29,4	60	1,6
CSGC.50x20	50	18,4	20	196,34	141,34	74,79	55	-	29,4	60	1,6
CSGC.50x25	50	18	25	191,62	150,62	80,28	41	-	29,4	60	1,53
CSGC.50x30	50	17,4	30	190,58	150,58	85,39	40	-	29,4	60	1,47
CSGC.50x35	50	18,9	35	187,15	162,15	90,1	25	-	29,4	60	1,47
CSGC.50x40	50	20,6	40	183,29	160,79	95,35	22,5	-	29,4	60	1,47
CSGC.50x45	50	22,5	45	179,94	169,94	98,13	10	-	29,4	60	1,47
CSGC.50x50	50	23,3	50	174,07	169,07	99,37	5	-	29,4	60	1,44
CSGC.50x55	50	26,1	55	168,64	183,64	111,04	-15	-	29,4	60	1,44
CSGC.50x60	50	31,5	60	162,61	187,61	118,08	-25	-	29,4	60	1,47
CSGC.50x65	50	36,6	65	155,95	190,95	125,44	-35	-	29,4	60	1,47
CSGC.50x70	50	39,5	70	153,63	193,63	133,06	-40	-	29,4	60	-

Continue next page...

How to order: Code + W x θ

## CARROS AÉREOS CSGC AERIAL CAM UNITS CSGC



### CSGC 65

#### Mounting Method

Blank: Drawing shape

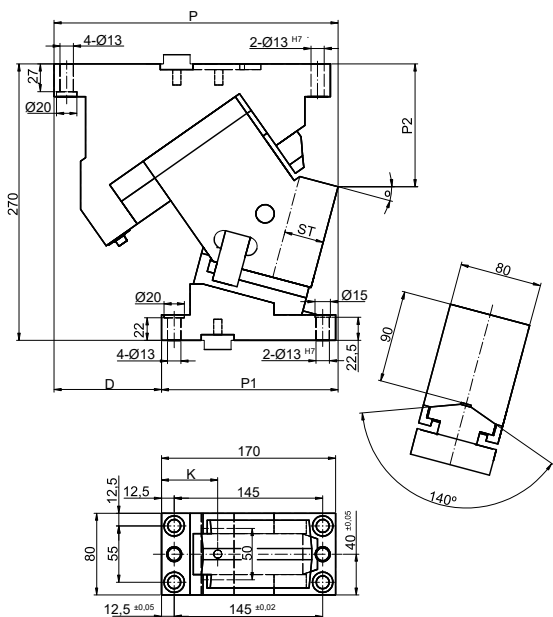
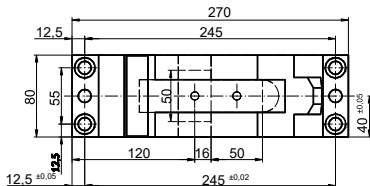
K: Key with 20 mm assemble

Code	W Working Face	ST Stroke	ø Angle	P	P1	P2	P3	D	K	Gas Spring	
										Max. Work Force	Extraction Force
	KN	mm	°	mm	mm	mm	mm	mm	mm	kN	N
CSGC.65x0	65	15	0	170	100	60	70	-	29,4	60	1,72
CSGC.65x5	65	15,6	5	170,36	105,36	67,22	65	-	29,4	60	1,67
CSGC.65x10	65	15,6	10	175,07	112,57	69,88	62,5	-	29,4	60	1,6
CSGC.65x15	65	17	15	174,09	119,09	72,92	55	-	29,4	60	1,6
CSGC.65x20	65	18,4	20	172,4	127,4	76,28	45	-	29,4	60	1,6
CSGC.65x30	65	19,5	30	171,78	135,78	83,71	35	-	29,4	60	1,47
CSGC.65x40	65	23,1	40	163,07	143,07	91,63	20	-	29,4	60	1,47
CSGC.65x50	65	24,9	50	156,22	151,22	104,5	5	-	29,4	60	1,44

Continue next page...

How to order: Code + W x Ø

CARROS AÉREOS CSGC  
AERIAL CAM UNITS CSGC



CSGC 80

Mounting Method

Blank: Drawing shape

K: Key with 20 mm assemble

N12: Dowel pin hole of cam holder and cam driver

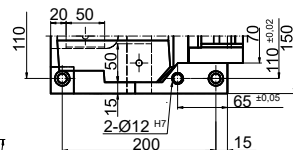
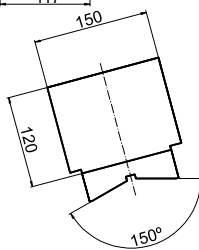
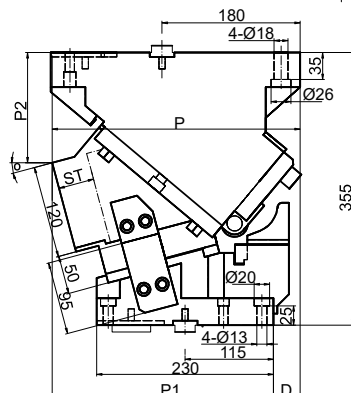
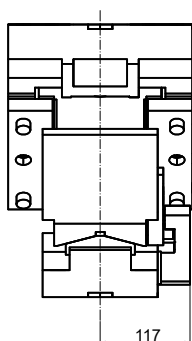
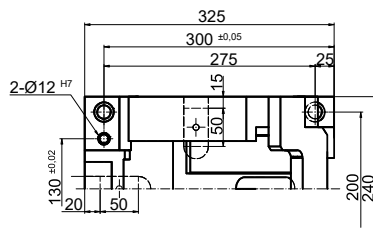
ea changed Ø12

Code	W Working Face	ST Stroke	Ø Angle	P	P1	P2	P3	D	K	Gas Spring	
										Max. Work Force	Extraction Force
	KN	mm	°	mm	mm	mm	mm	mm	mm	kN	N
CSGC.65x60	65	32	60	146,29	161,29	116,78	-15	-	29,4	60	1,47
CSGC.80x0	80	30,2	0	277	142	110	135	65	49	149	1,85
CSGC.80x5	80	30,5	5	278,32	153,32	115,67	125	65	49	149	1,76
CSGC.80x10	80	31,1	10	274,54	164,54	117,32	110	65	49	149	1,69
CSGC.80x15	80	33,9	15	277,58	172,58	119,95	105	55	49	149	1,69
CSGC.80x20	80	32,3	20	273,34	178,34	123,52	95	55	49	149	1,59
CSGC.80x25	80	35	25	268,75	188,75	128,03	80	55	49	149	1,59
CSGC.80x30	80	34,7	30	261,73	196,73	133,42	65	60	49	149	1,54
CSGC.80x35	80	37,7	35	258,2	203,2	139,66	55	60	49	149	1,54
CSGC.80x40	80	39,9	40	245,09	210,09	146,7	35	50	49	149	1,52
CSGC.80x45	80	43,7	45	245,34	215,034	154,49	30	50	49	149	1,52
CSGC.80x50	80	46,7	50	255,87	220,87	162,97	5	50	49	149	1,5
CSGC.80x55	80	53,8	55	229,64	229,64	172,07	0	60	49	149	1,52

Continue next page...

How to order: Code + W x Ø

## CARROS AÉREOS CSGC AERIAL CAM UNITS CSGC



### CSGC 150

#### Mounting Method

Blank: Drawing shape

K: Key with 20 mm assemble

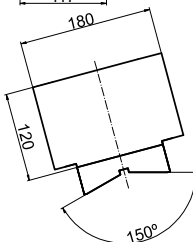
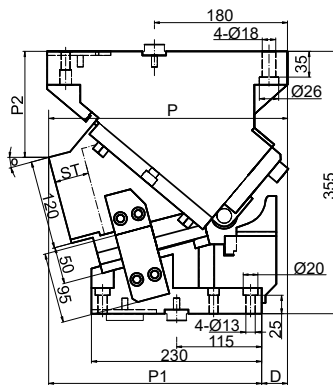
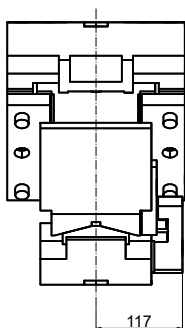
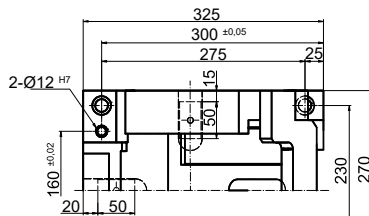
N12: Dowel pin hole of cam holder and  
cam driver ea changed Ø13

Code	W Working Face	ST Stroke	ø Angle	P	P1	P2	P3	D	K	Gas Spring	
										Max. Work Force	Extraction Force
	KN	mm	°	mm	mm	mm	mm	mm	mm	kN	N
CSGC.80x60	80	64,1	60	228,58	228,58	171,73	-20	50	49	149	1,52
CSGC.80x65	80	70,9	65	233,67	233,67	191,87	-30	50	49	149	1,52
CSGC.150x0	150	28,7	0	325	245	130	80	-	147	391	7,15
CSGC.150x5	150	32,3	5	319,7	249,7	133,26	60	-	147	391	7,15
CSGC.150x10	150	35,9	10	319,06	274,06	137,79	45	-	147	391	7,15
CSGC.150x15	150	39,7	15	322,98	287,98	143,56	35	-	147	391	7,15
CSGC.150x20	150	43,6	20	326,33	301,33	150,51	25	-	147	391	7,15
CSGC.150x25	150	47,8	25	329,03	214,03	158,61	15	-	147	391	7,15
CSGC.150x30	150	52,3	30	325,98	325,98	167,78	0	-	147	391	7,15
CSGC.150x35	150	57,4	35	322,08	337,08	192,95	-15	-	147	391	7,15
CSGC.150x40	150	63	40	312,26	347,26	204,06	-35	-	147	391	7,15
CSGC.150x45	150	69,6	45	306,42	356,42	216,01	-50	-	147	391	7,15
CSGC.150x50	150	77,5	50	249,51	364,51	228,71	-70	-	147	391	7,15

Continue next page...

How to order: Code + W x Ø

CARROS AÉREOS CSGC  
AERIAL CAM UNITS CSGC



CSGC 200

Working Face (option)

Mounting Method

Blank: Drawing shape

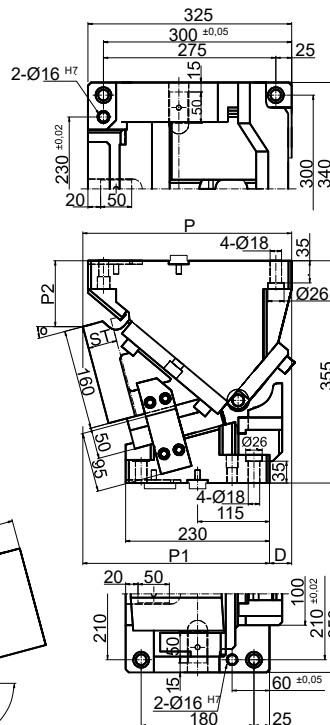
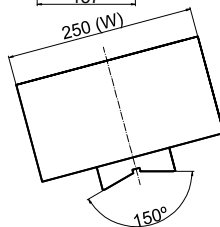
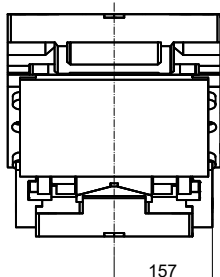
K: Key with 20 mm assemble

Code	W Working Face	ST Stroke	Ø Angle	P	P1	P2	P3	D	K	Max. Work Force	Gas Spring
											Extraction Force
	KN	mm	°	mm	mm	mm	mm	mm	mm	kN	N
CSGC.150x55	150	87,2	55	281,46	371,46	242,07	-90	-	147	391	7,15
CSGC.150x60	150	99,6	60	272,22	377,22	255,98	-105	-	147	391	7,15
CSGC.150x65	150	116,5	65	261,75	381,75	270,34	-120	-	147	391	7,15
CSGC.200x0	200	28,7	0	325	245	130	80	-	147	396	7,15
CSGC.200x5	200	32,3	5	319,7	259,7	133,26	60	-	147	396	7,15
CSGC.200x10	200	35,9	10	319,06	274,06	137,79	45	-	147	396	7,15
CSGC.200x15	200	39,7	15	322,98	287,98	143,56	35	-	147	396	7,15
CSGC.200x20	200	43,6	20	326,33	301,33	150,57	25	-	147	396	7,15
CSGC.200x25	200	47,8	25	329,03	314,03	158,61	15	-	147	396	7,15
CSGC.200x30	200	52,3	30	325,98	325,98	167,78	0	-	147	396	7,15
CSGC.200x35	200	57,4	35	322,08	337,08	192,95	-15	-	147	396	7,15
CSGC.200x40	200	63	40	312,26	347,26	204,06	-35	-	147	396	7,15
CSGC.200x45	200	69,6	45	306,42	356,42	216,01	-50	-	147	396	7,15

Continue next page...

How to order: Code + W x Ø

## CARROS AÉREOS CSGC AERIAL CAM UNITS CSGC



### CSGC 300

#### Working Face (option)

Mounting Method

Blank: Drawing shape

K: Key with 20 mm assemble

Code	W Working Face	ST Stroke	ø Angle	P	P1	P2	P3	D	K	Gas Spring	
										Max. Work Force	Extraction Force
	KN	mm	°	mm	mm	mm	mm	mm	mm	kN	N
CSGC.200x50	200	77,5	50	294,51	364,51	228,71	-70	-	147	396	7,15
CSGC.200x55	200	87,2	55	287,56	371,46	242,07	-90	-	147	396	7,15
CSGC.200x60	200	99,6	60	272,22	377,22	255,98	-105	-	147	396	7,15
CSGC.200x65	200	116,5	65	261,75	381,75	270,34	-120	-	147	396	7,15
CSGC.300x0	300	28,7	0	325	245	90	80	-	294	645	14,3
CSGC.300x5	300	32,3	5	323,19	263,19	93,41	60	-	294	645	14,3
CSGC.300x10	300	35,9	10	326,01	281,01	98,4	45	-	294	645	14,3
CSGC.300x15	300	39,7	15	333,33	298,33	104,92	35	-	294	645	14,3
CSGC.300x20	300	43,6	20	340,02	315,02	112,93	25	-	294	645	14,3
CSGC.300x25	300	47,8	25	345,94	330,94	122,35	15	-	294	645	14,3
CSGC.300x30	300	52,3	30	345,98	345,98	133,13	0	-	294	645	14,3
CSGC.300x35	300	57,4	35	345,03	360,03	160,19	-15	-	294	645	14,3
CSGC.300x40	300	63	40	337,97	372,97	173,41	-35	-	294	645	14,3
CSGC.300x45	300	69,6	45	334,71	384,71	187,72	-50	-	294	645	14,3
CSGC.300x50	300	77,5	50	325,15	395,15	203	-70	-	294	645	14,3
CSGC.300x55	300	87,2	55	314,23	404,23	219,12	-90	-	294	645	14,3
CSGC.300x60	300	99,6	60	306,87	411,87	235,98	-105	-	294	645	14,3
CSGC.300x65	300	116,5	65	298	418	253,44	-120	-	294	645	14,3

How to order: Code + W x Ø