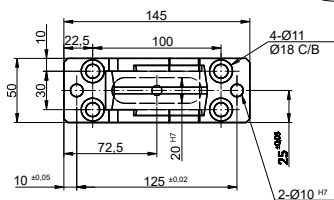
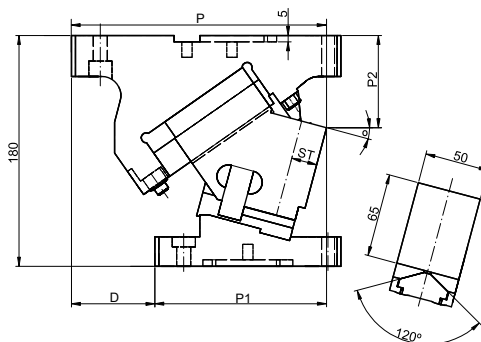
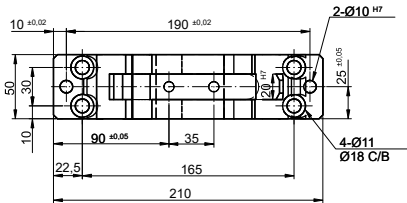


CARROS AÉREOS CSGM AERIAL CAM UNITS CSGM



CSGM 50

Mounting Method

Blank: Drawing shape

K: Key with 20 mm assemble

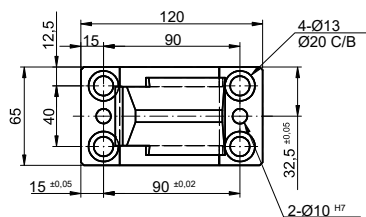
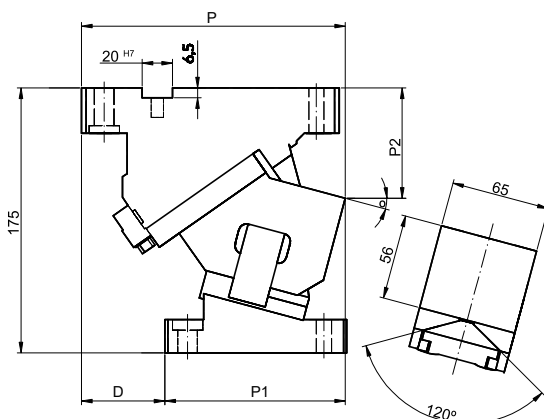
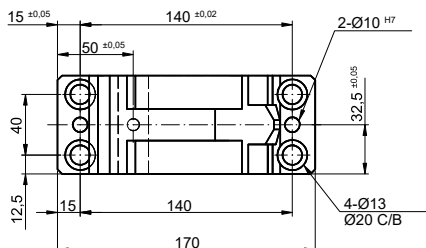
Code	W Working Face	ST Stroke	ø Angle	P	P1	P2	P3	D	K	Max. Work Force	Spring
											Extraction Force
	KN	mm	°	mm	mm	mm	mm	mm	mm	kN	N
CSGM.50x0	50	15	0	195	115	67,5	112,5	80	-	60	1,31
CSGM.50x5	50	15,6	5	198,04	123,04	68,29	111,71	75	-	60	1,3
CSGM.50x10	50	15,6	10	195,99	130,99	69,77	110,23	65	-	60	1,14
CSGM.50x15	50	17	15	198,77	133,77	71,95	108,05	65	-	60	1,14
CSGM.50x20	50	18,4	20	196,34	141,34	74,79	105,31	55	-	60	1,14
CSGM.50x25	50	18	25	191,62	150,62	80,28	99,72	41	-	60	1,29
CSGM.50x30	50	17,4	30	190,58	150,58	85,39	97,61	40	-	60	1,17
CSGM.50x35	50	18,9	35	187,15	162,15	90,1	89,9	25	-	60	1,17
CSGM.50x40	50	20,6	40	183,29	160,79	95,35	84,65	22,5	-	60	1,17
CSGM.50x45	50	22,5	45	179,94	169,94	98,13	81,87	10	-	60	1,17
CSGM.50x50	50	23,3	50	174,07	169,07	99,37	80,63	5	-	60	1,17
CSGM.50x55	50	26,1	55	168,64	183,64	111,04	68,96	-15	-	60	1,17
CSGM.50x60	50	31,5	60	162,61	187,61	118,08	61,92	-25	-	60	1,17
CSGM.50x65	50	36,6	65	155,95	190,95	125,44	54,56	-35	-	60	1,17
CSGM.50x70	50	39,5	70	153,63	193,63	133,06	46,94	-40	-	60	1,17

Continue next page...

How to order: Code + W x ø

CARROS AÉREOS CSGM

AERIAL CAM UNITS CSGM



CSGM 65

Mounting Method

Blank: Drawing shape

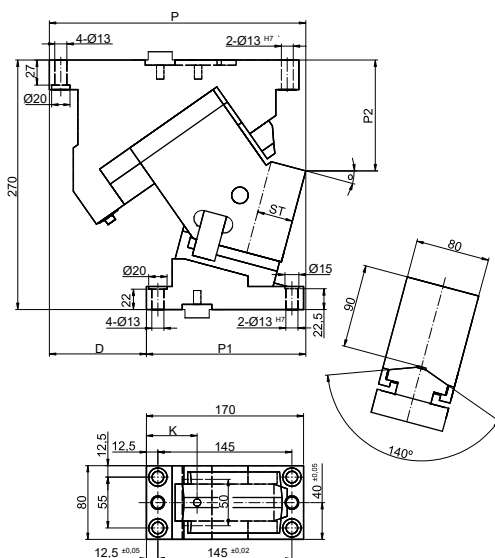
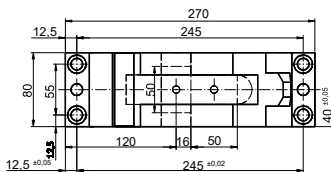
K: Key with 20 mm assemble

Code	W Working Face	ST Stroke	θ Angle	P	P1	P2	P3	D	K	Max. Work Force	Spring	
											Extraction Force	Extraction Force
	KN	mm	°	mm	mm	mm	mm	mm	mm	kN	N	N
CSGM.65x0	65	15	0	170	100	60	115	70	-	60	1,31	
CSGM.65x5	65	15,6	5	170,36	105,36	67,22	107,78	65	-	60	1,3	
CSGM.65x10	65	15,6	10	175,07	112,57	69,88	105,12	62,5	-	60	1,14	
CSGM.65x15	65	17	15	174,09	119,09	72,92	102,08	55	-	60	1,14	
CSGM.65x20	65	18,4	20	172,4	127,4	76,28	98,72	45	-	60	1,14	
CSGM.65x30	65	19,5	30	171,78	135,78	83,71	91,29	35	-	60	1,17	
CSGM.65x40	65	23,1	40	163,07	143,07	91,63	83,37	20	-	60	1,17	
CSGM.65x50	65	24,9	50	156,22	151,22	104,5	70,5	5	-	60	1,17	
CSGM.65x60	65	32	60	146,29	161,29	116,78	58,22	-15	-	60	1,17	

Continue next page...

How to order: Code + W x θ

CARROS AÉREOS CSGM
AERIAL CAM UNITS CSGM



CSGM 80

Mounting Method

Blank: Drawing shape

K: Key wisth 20 mm assemble

N12: Dowel pin hole of cam holder and cam driver

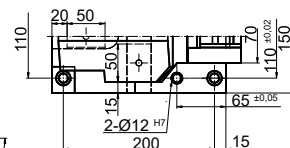
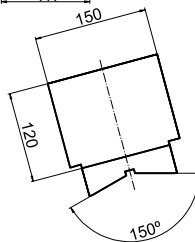
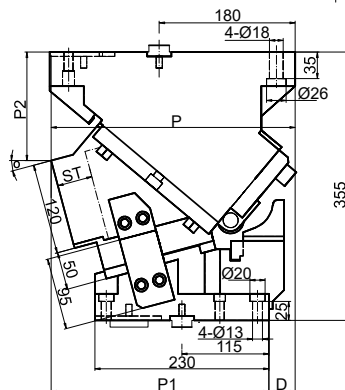
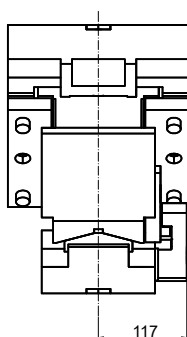
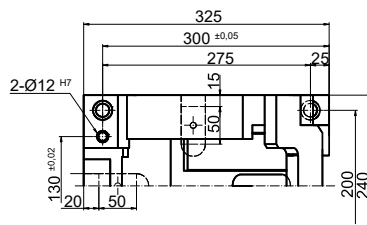
ea changed Ø12

Code	W Working Face	ST Stroke	ø Angle	P	P1	P2	P3	D	K	Max. Work Force	Spring
											Extraction Force
	KN	mm	°	mm	mm	mm	mm	mm	mm	kN	N
CSGM.80x0	80	30,2	0	277	142	110	160	135	65	149	1,37
CSGM.80x5	80	30,5	5	278,32	153,32	115,67	154,33	125	65	149	1,37
CSGM.80x10	80	31,1	10	274,54	164,54	117,32	152,68	110	65	149	1,37
CSGM.80x15	80	33,9	15	277,58	172,58	119,95	150,05	105	55	149	1,37
CSGM.80x20	80	32,3	20	273,34	178,34	123,52	146,48	95	55	149	1,25
CSGM.80x25	80	35	25	268,75	188,75	128,03	141,97	80	55	149	1,25
CSGM.80x30	80	34,7	30	261,73	196,73	133,42	136,58	65	60	149	1,25
CSGM.80x35	80	37,7	35	258,2	203,2	139,66	130,34	55	60	149	1,25
CSGM.80x40	80	39,9	40	245,09	210,09	146,7	123,3	35	50	149	1,25
CSGM.80x45	80	43,7	45	245,34	215,034	154,49	115,51	30	50	149	1,25
CSGM.80x50	80	46,7	50	255,87	220,87	162,97	107,03	5	50	149	1,13
CSGM.80x55	80	53,8	55	229,64	229,64	172,07	97,93	0	60	149	1,25
CSGM.80x60	80	64,1	60	228,58	228,58	171,73	88,27	-20	50	149	1,25
CSGM.80x65	80	70,9	65	233,67	233,67	191,87	78,13	-30	50	149	1,25

Continue next page...

How to order: Code + W x ø

CARROS AÉREOS CSGM AERIAL CAM UNITS CSGM



CSGM 150

Mounting Method

Blank: Drawing shape

K: Key with 20 mm assemble

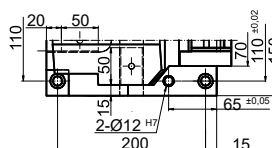
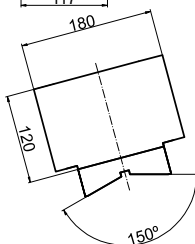
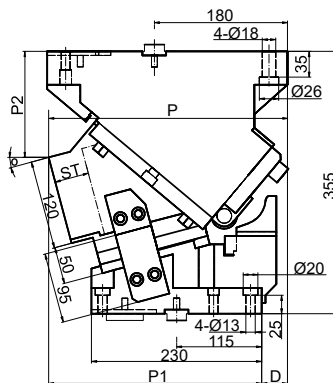
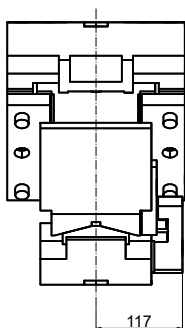
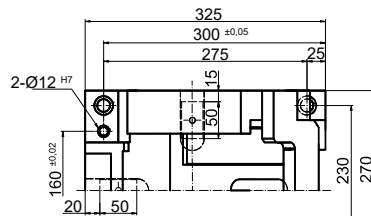
N12: Dowel pin hole of cam holder and cam driver ea changed Ø13

Code	W Working Face	ST Stroke	θ Angle	P	P1	P2	P3	D	K	Max. Work Force	Spring	
											mm	mm
CSGM.150x0	150	28,7	0	325	245	130	225	80	-	391	2,29	
CSGM.150x5	150	32,3	5	319,7	249,7	133,26	221,74	60	-	391	2,29	
CSGM.150x10	150	35,9	10	319,06	274,06	137,79	217,21	45	-	391	2,29	
CSGM.150x15	150	39,7	15	322,98	287,98	143,56	211,44	35	-	391	2,29	
CSGM.150x20	150	43,6	20	326,33	301,33	150,51	204,49	25	-	391	2,29	
CSGM.150x25	150	47,8	25	329,03	314,03	158,61	196,39	15	-	391	2,29	
CSGM.150x30	150	52,3	30	325,98	325,98	167,78	187,22	0	-	391	2,29	
CSGM.150x35	150	57,4	35	322,08	337,08	192,95	162,05	-15	-	391	2,29	
CSGM.150x40	150	63	40	312,26	347,26	204,06	150,94	-35	-	391	2,29	
CSGM.150x45	150	69,6	45	306,42	356,42	216,01	138,99	-50	-	391	2,29	
CSGM.150x50	150	77,5	50	249,51	364,51	228,71	126,29	-70	-	391	2,29	
CSGM.150x55	150	87,2	55	281,46	371,46	242,07	112,93	-90	-	391	2,29	
CSGM.150x60	150	99,6	60	272,22	377,22	255,98	99,02	-105	-	391	2,29	
CSGM.150x65	150	116,5	65	261,75	381,75	270,34	84,66	-120	-	391	2,29	

Continue next page...

How to order: Code + W x θ

CARROS AÉREOS CSGM
AERIAL CAM UNITS CSGM



CSGM 200

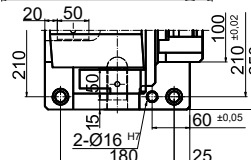
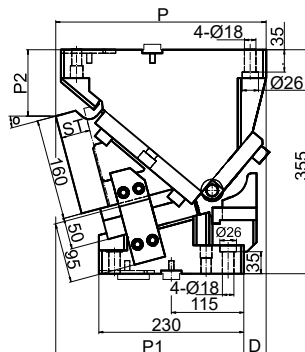
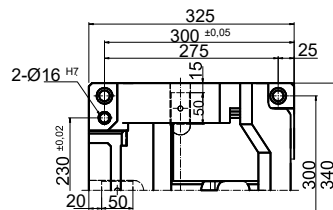
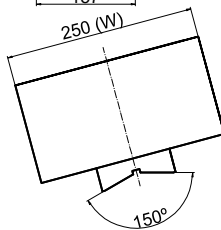
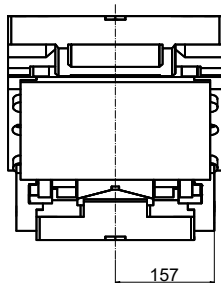
Working Face (option)
Mounting Method
 Blank: Drawing shape
 K: Key with 20 mm assemble

Code	W Working Face	ST Stroke	ø Angle	P	P1	P2	P3	D	K	Max. Work Force	Spring
											Extraction Force
	KN	mm	°	mm	mm	mm	mm	mm	mm	kN	N
CSGM.200x0	200	28,7	0	325	245	130	225	80	-	396	2,29
CSGM.200x5	200	32,3	5	319,7	259,7	133,26	221,74	60	-	396	2,29
CSGM.200x10	200	35,9	10	319,06	274,06	137,79	217,21	45	-	396	2,29
CSGM.200x15	200	39,7	15	322,98	287,98	143,56	211,44	35	-	396	2,29
CSGM.200x20	200	43,6	20	326,33	301,33	150,57	204,49	25	-	396	2,29
CSGM.200x25	200	47,8	25	329,03	314,03	158,61	196,39	15	-	396	2,29
CSGM.200x30	200	52,3	30	325,98	325,98	167,78	187,22	0	-	396	2,29
CSGM.200x35	200	57,4	35	322,08	337,08	192,95	162,05	-15	-	396	2,29
CSGM.200x40	200	63	40	312,26	347,26	204,06	150,94	-35	-	396	2,29
CSGM.200x45	200	69,6	45	306,42	356,42	216,01	138,99	-50	-	396	2,29
CSGM.200x50	200	77,5	50	294,51	364,51	228,71	126,29	-70	-	396	2,29
CSGM.200x55	200	87,2	55	287,56	371,46	242,07	112,93	-90	-	396	2,29
CSGM.200x60	200	99,6	60	272,22	377,22	255,98	99,02	-105	-	396	2,29
CSGM.200x65	200	116,5	65	261,75	381,75	270,34	84,66	-120	-	396	2,29

Continue next page...

How to order: Code + W x ø

CARROS AÉREOS CSGM AERIAL CAM UNITS CSGM



CSGM 300

Working Face (option)

Mounting Method

Blank: Drawing shape

K: Key with 20 mm assemble

Code	W Working Face	ST Stroke	θ Angle	P	P1	P2	P3	D	K	Max. Work Force	Spring	
											KN	mm
CSGM.300x0	300	28,7	0	325	245	90	265	80	-	645	4,58	
CSGM.300x5	300	32,3	5	323,19	263,19	93,41	261,59	60	-	645	4,58	
CSGM.300x10	300	35,9	10	326,01	281,01	98,4	256,6	45	-	645	4,58	
CSGM.300x15	300	39,7	15	333,33	298,33	104,92	250,08	35	-	645	4,58	
CSGM.300x20	300	43,6	20	340,02	315,02	112,93	242,08	25	-	645	4,58	
CSGM.300x25	300	47,8	25	345,94	330,94	122,35	232,65	15	-	645	4,58	
CSGM.300x30	300	52,3	30	345,98	345,98	133,13	221,87	0	-	645	4,58	
CSGM.300x35	300	57,4	35	345,03	360,03	160,19	194,81	-15	-	645	4,58	
CSGM.300x40	300	63	40	337,97	372,97	173,41	181,59	-35	-	645	4,58	
CSGM.300x45	300	69,6	45	334,71	384,71	187,72	167,28	-50	-	645	4,58	
CSGM.300x50	300	77,5	50	325,15	395,15	203	152	-70	-	645	4,58	
CSGM.300x55	300	87,2	55	314,23	404,23	219,12	135,88	-90	-	645	4,58	
CSGM.300x60	300	99,6	60	306,87	411,87	235,98	119,02	-105	-	645	4,58	
CSGM.300x65	300	116,5	65	298	418	253,44	101,56	-120	-	645	4,58	

How to order: Code + W x θ