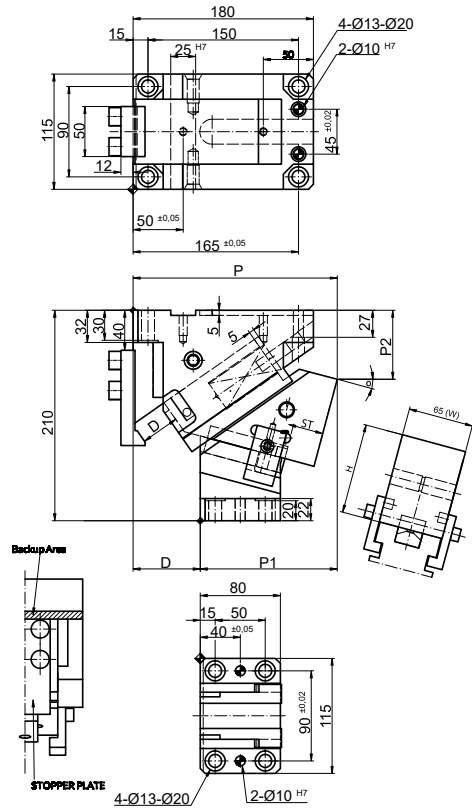


CARROS AÉREOS CSKM AERIAL CAM UNITS CSKM



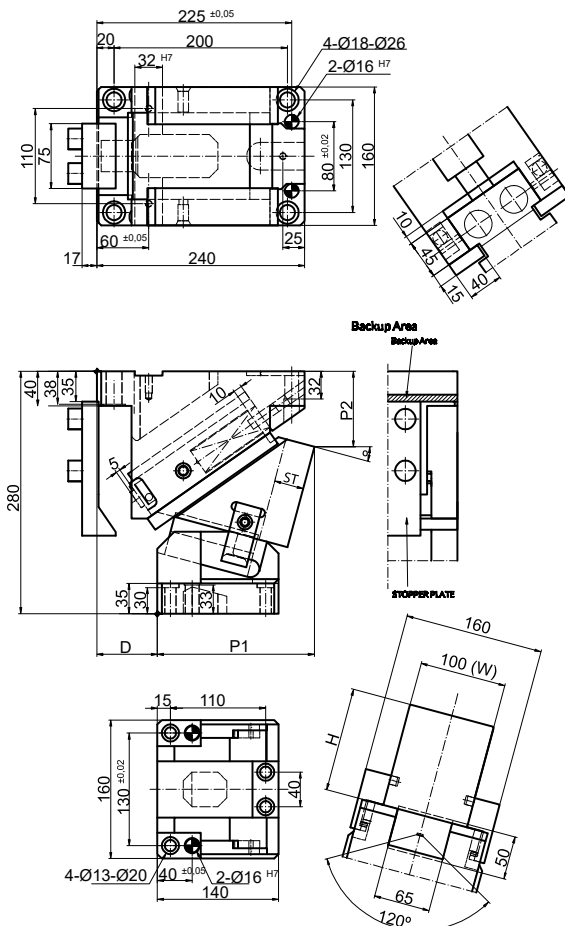
CSKM 65

Code	W Mounting width mm	θ Working Angle °	ST Stroke mm	P mm	D mm	P1 mm	P2 mm	H mm	Max. Work Force kN	Spring	
										Extraction Force N	
CSKM.65x0	65	0	26,9	185,94	75	110,94	56,57	80	58	0,79	
CSKM.65x5	65	5	27	193,01	70	123,01	56,57	90	58	0,77	
CSKM.65x10	65	10	31,6	196,8	70	126,8	67,58	80	58	0,85	
CSKM.65x15	65	15	32,2	203,77	67	113,47	68,81	90	58	0,77	
CSKM.65x20	65	20	33,8	198,1	60	138,1	74,31	80	58	0,85	
CSKM.65x25	65	25	35	204,75	55	149,75	76,73	90	58	0,77	
CSKM.65x30	65	30	33,5	193,63	50	143,63	89,52	80	58	0,85	
CSKM.65x35	65	35	35,4	199,76	45	154,76	93,06	90	58	0,77	
CSKM.65x40	65	40	42,9	188,72	40	148,72	99,62	80	58	0,85	
CSKM.65x45	65	45	46,5	194,12	34	160,13	104,16	90	58	0,77	
CSKM.65x50	65	50	54,5	190	30	160	110	90	58	0,77	
CSKM.65x55	65	55	43,6	190	20	170	115	100	58	0,62	
CSKM.65x60	65	60	50	190	20	170	115	100	58	0,54	
CSKM.65x65	65	65	47,3	190	0	190	130	110	58	0,39	
CSKM.65x70	65	70	58,5	190	0	190	130	110	58	0,32	

Continue next page...

How to order: Code + W x θ

CARROS AÉREOS CSKM AERIAL CAM UNITS CSKM



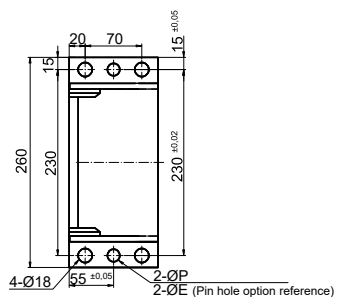
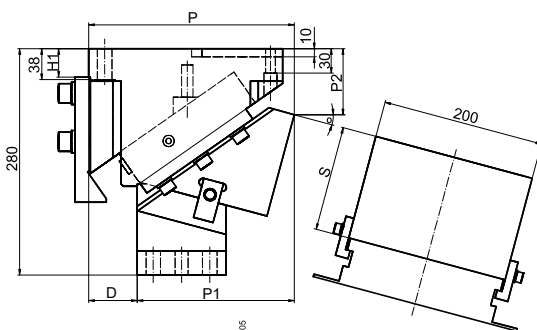
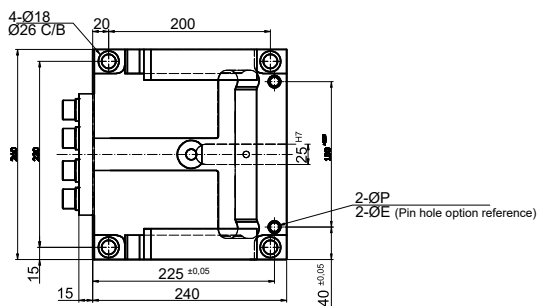
CSKM 100

Code	W Mounting width	θ Working Angle	ST Stroke	P	D	P1	P2	H	Max. Work Force	Spring
										Extraction Force
	mm	°	mm	mm	mm	mm	mm	mm	kN	N
CSKM.100x0	100	0	28,3	-	80	160	85	195	96	2,1
CSKM.100x10	100	10	33,3	-	60	180	90	190	96	2,1
CSKM.100x20	100	20	30,9	-	50	190	110	170	96	1,86
CSKM.100x30	100	30	33,5	-	30	210	110	170	96	2,1
CSKM.100x40	100	40	39	-	30	210	115	165	96	2,1
CSKM.100x50	100	50	46,7	-	10	230	120	160	96	1,91
CSKM.100x60	100	60	60	-	0	240	145	135	96	1,48
CSKM.100x70	100	70	58,5	-	0	240	145	135	96	0,99

Continue next page...

How to order: Code + W x θ

CARROS AÉREOS CSKM AERIAL CAM UNITS CSKM



CSKM 200

Code	W Mounting width	θ Working Angle	ST Stroke	P	D	P1	P2	H	Max. Work Force	Spring	
										mm	°
CSKM.200x0	200	0	28,3	-	80	160	85	195	231	4,21	
CSKM.200x10	200	10	33,3	-	60	180	90	190	231	4,21	
CSKM.200x20	200	20	30,9	-	50	190	110	170	231	3,71	
CSKM.200x30	200	30	33,5	-	30	210	110	170	231	4,2	
CSKM.200x40	200	40	39	-	30	210	115	165	231	4,2	
CSKM.200x50	200	50	46,7	-	10	230	120	160	231	3,81	
CSKM.200x60	200	60	60	-	0	240	145	135	231	2,97	
CSKM.200x70	200	70	58,5	-	0	240	145	135	231	1,98	

How to order: Code + W x θ