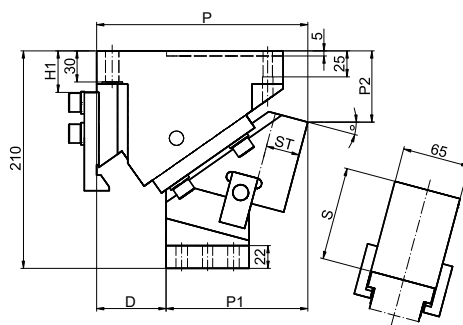
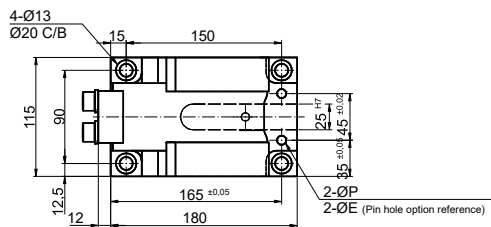


CARROS AÉREOS CSSM

AERIAL CAM UNITS CSSM



CSSM 65

Mounting Method

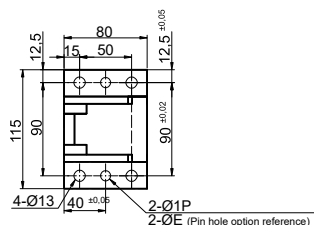
Blank: Prepared pin hole.

K: Positioned by the dedicated hey for the 25 mm.

DK: Refer to below chart for pin hole.

HK: Refer to below chart for pin table.

HDK: Refer to below chart for pin table.

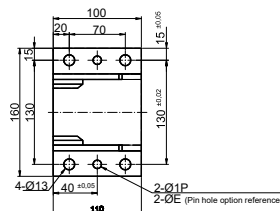
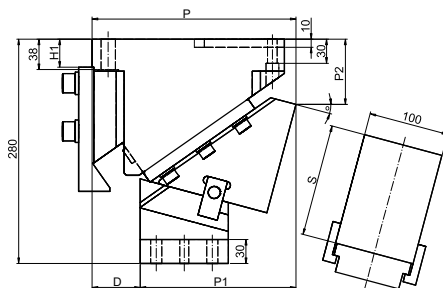
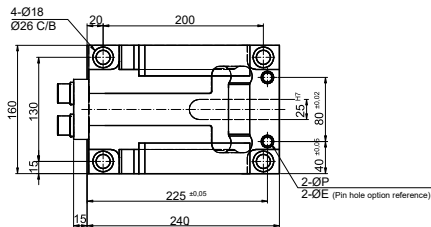


Code	W Working Face	ST Stroke	ø Angle	P	P1	P2	D	H1	S	ØP	ØE	Spring	
												Max. Work Force	Extraction Force
	KN	mm	°	mm	mm	mm	mm	mm	mm	mm	mm	kN	kN
CSSM.65x0	65	26,9	0	185,94	110,94	56,57	75	55	80	9	10/11/12	39	0,79
CSSM.65x5	65	27	5	193,01	123,01	56,57	70	55	90	9	10/11/12	39	0,77
CSSM.65x10	65	31,6	10	196,8	126,8	67,58	70	40	80	9	10/11/12	39	0,85
CSSM.65x15	65	32,2	15	203,77	136,77	68,81	67	40	90	9	10/11/12	39	0,77
CSSM.65x20	65	33,8	20	198,1	138,1	74,31	60	10	80	9	10/11/12	39	0,85
CSSM.65x25	65	35	25	204,75	149,75	6,73	55	10	90	9	10/11/12	39	0,77
CSSM.65x30	65	33,5	30	193,63	143,63	89,52	50	10	80	9	10/11/12	46	0,85
CSSM.65x35	65	35,4	35	199,76	154,76	93,06	45	10	90	9	10/11/12	46	0,77
CSSM.65x40	65	42,9	40	188,72	148,72	99,62	40	15	80	9	10/11/12	46	0,85
CSSM.65x45	65	46,5	45	194,12	160,13	104,16	34	15	90	9	10/11/12	46	0,77
CSSM.65x50	65	54,5	50	190	160	110	30	10	90	9	10/11/12	58	0,77
CSSM.65x55	65	43,6	55	190	170	115	20	10	100	9	10/11/12	58	0,62
CSSM.65x60	65	50	60	190	170	115	20	10	100	9	10/11/12	58	0,54
CSSM.65x65	65	47,3	65	190	190	130	0	10	110	9	10/11/12	58	0,39
CSSM.65x70	65	58,5	70	190	190	130	0	10	110	9	10/11/12	58	0,32

Continue next page...

How to order: Code + W x Ø

CARROS AÉREOS CSSM
AERIAL CAM UNITS CSSM



CSSM 100

Mounting Method

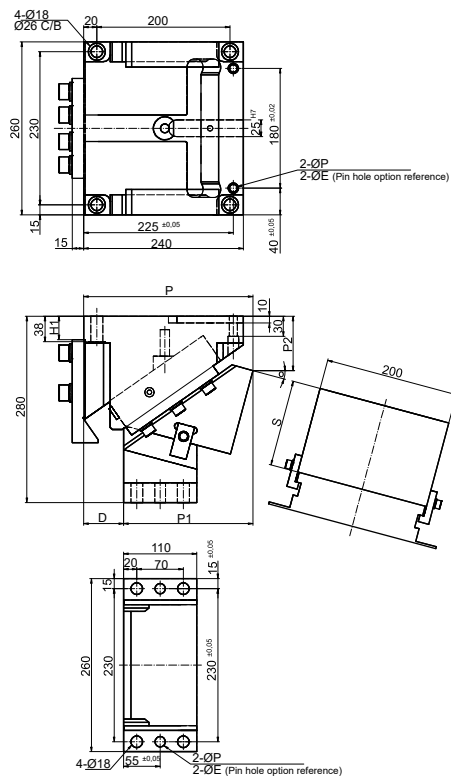
- Blank: Prepared pin hole.
- K: Positioned by the dedicated hey for the 25 mm.
- DK: Refer to below chart for pin hole.
- HK: Refer to below chart for pin table.
- HDK: Refer to below chart for pin table.

Code	W Working Face	ST Stroke	θ Angle	P	P1	P2	D	H1	S	ØP	ØE	Max. Work Force	Spring	
													KN	mm
CSSM.100x0	100	28,3	0	240	180	85	60	55	100	11	12/13	87	2,1	
CSSM.100x5	100	28,4	5	236,89	176,89	73,82	60	55	140	11	12/13	87	2,09	
CSSM.100x10	100	33,3	10	240	180	90	60	35	100	11	12/13	87	0,29	
CSSM.100x15	100	33,9	15	254,35	194,35	81,51	60	35	140	11	12/13	87	2,09	
CSSM.100x20	100	30,9	20	240	190	110	50	15	11	11	12/13	87	2,23	
CSSM.100x25	100	32	25	253,26	203,26	102,6	50	15	140	11	12/13	87	2,03	
CSSM.100x30	100	33,5	30	240	210	110	30	10	120	11	12/13	87	2,1	
CSSM.100x35	100	35,4	35	252,34	222,34	109,69	30	10	140	11	12/13	87	1,91	
CSSM.100x40	100	39	40	240	210	115	30	10	120	11	12/13	87	2,1	
CSSM.100x45	100	42,3	45	247,41	217,41	114,68	30	10	140	11	12/13	87	1,91	
CSSM.100x50	100	46,7	50	240	230	120	10	10	140	11	12/13	96	1,91	
CSSM.100x55	100	52,3	55	240	240	145	0	10	140	11	12/13	96	1,7	
CSSM.100x60	100	60	60	240	240	145	0	10	140	11	12/13	96	1,48	
CSSM.100x65	100	47,3	65	240	240	145	0	10	140	11	12/13	96	122	
CSSM.100x70	100	58,5	70	240	240	145	0	10	140	11	12/13	96	1	

Continue next page...

How to order: Code + W x θ

CARROS AÉREOS CSSM AERIAL CAM UNITS CSSM



CSSM 200

Mounting Method

Blank: Prepared pin hole.

K: Positioned by the dedicated hey for the 25 mm.

DK: Refer to below chart for pin hole.

HK: Refer to below chart for pin table.

HDK: Refer to below chart for pin table.

Code	W Working Face	ST Stroke	θ Angle	P	P1	P2	D	H1	S	$\varnothing P$	$\varnothing E$	Spring	
												Max. Work Force	Extraction Force
	KN	mm	°	mm	mm	mm	mm	mm	mm	mm	mm	kN	kN
CSSM.200x0	200	28,3	0	240	180	90	60	60	100	11	12/13	193	4,21
CSSM.200x5	200	28,4	5	236,82	176,82	78,84	60	60	130	11	12/13	193	4,17
CSSM.200x10	200	33,3	10	240	180	90	60	35	100	11	12/13	193	4,59
CSSM.200x15	200	33,9	15	254,35	194,35	81,51	60	35	130	11	12/13	193	4,17
CSSM.200x20	200	30,9	20	240	190	110	50	15	100	11	12/13	193	4,46
CSSM.200x25	200	32	25	253,27	203,27	102,6	50	15	130	11	12/13	193	4,05
CSSM.200x30	200	33,5	30	240	210	110	30	10	120	11	12/13	193	4,2
CSSM.200x35	200	35,4	35	252,34	222,34	109,69	30	10	140	11	12/13	193	3,81
CSSM.200x40	200	39	40	240	240	115	30	10	120	11	12/13	193	4,2
CSSM.200x45	200	42,3	45	247,41	217,41	114,68	30	10	140	11	12/13	193	3,81
CSSM.200x50	200	46,7	50	240	230	120	10	10	140	11	12/13	231	3,81
CSSM.200x55	200	52,3	55	240	240	145	0	10	140	11	12/13	231	3,4
CSSM.200x60	200	60	60	240	240	145	0	10	140	11	12/13	231	2,97
CSSM.200x65	200	47,3	65	240	240	145	0	10	140	11	12/13	231	2,45
CSSM.200x70	200	58,5	70	240	240	145	0	10	140	11	12/13	231	1,98

How to order: Code + W x θ