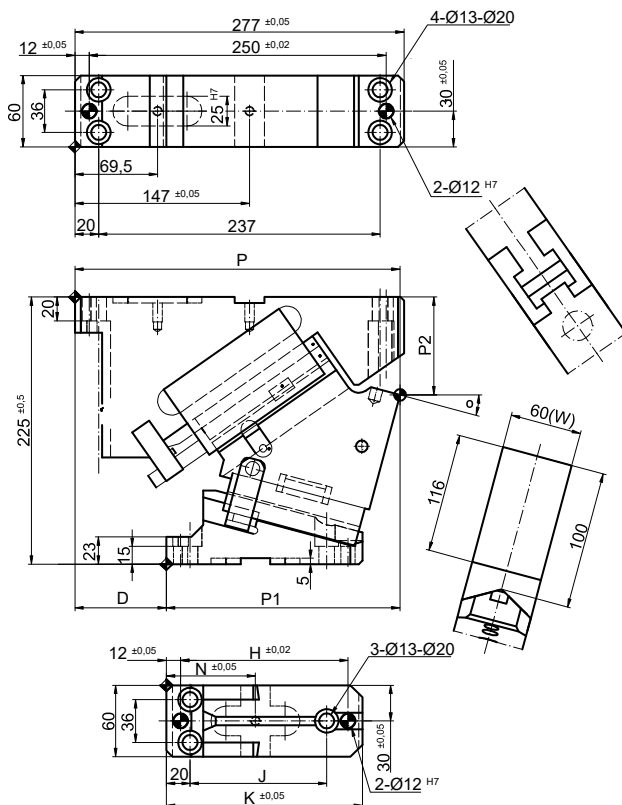


CARROS AÉREOS CSVC AERIAL CAM UNITS CSVC



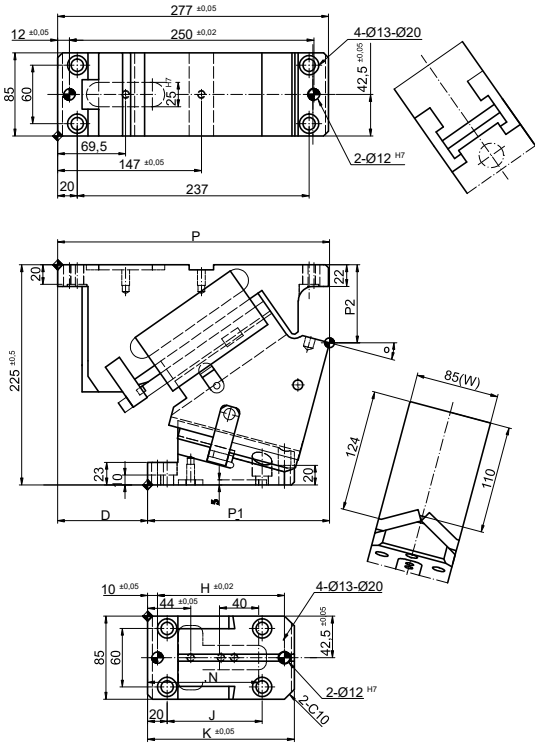
CSVC 60

Code	W Mounting Width	θ Working Angle	T Travel	P	P1	P2	D	H	J	K	N	R	Q	Max Work Force	Gas Spring
															Extraction Force
	mm	°	mm	N	N	mm	N	mm	mm	mm	mm	mm	mm	kN	kN
CSVC.60x0	60	0	19,3	267	167	69	100	141	115	165	75	-	-	79	1,61
CSVC.60x5	60	5	21,3	274,45	179,45	73,08	95	141	115	165	75	-	-	79	1,61
CSVC.60x10	60	10	23,3	272,04	186,04	77,56	86	141	115	165	75	-	-	79	1,61
CSVC.60x15	60	15	25,4	273,74	196,74	82,44	77	141	115	165	75	-	-	79	1,61
CSVC.60x20	60	20	27,6	273,5	204,5	88,73	69	141	115	165	75	-	-	79	1,61
CSVC.60x25	60	25	30	271,28	215,28	93,53	56	141	115	165	75	-	-	79	1,61
CSVC.60x30	60	30	32,6	270,02	222,02	98,57	48	141	115	165	75	-	-	79	1,61
CSVC.60x35	60	35	35,4	266,76	217,76	105,15	49	121	95	145	65	-	-	79	1,61
CSVC.60x40	60	40	38,6	262,47	223,47	112,1	39	121	95	145	65	-	-	79	1,61
CSVC.60x45	60	45	42,3	256,13	225,13	126,5	31	121	95	145	65	-	-	79	1,61
CSVC.60x50	60	50	46,7	249,8	226,8	134,78	23	106	80	130	58	-	-	79	1,61
CSVC.60x55	60	55	52,3	247,39	231,39	141,94	16	106	80	130	58	-	-	79	1,44
CSVC.60x60	60	60	60	237,95	232,95	149,36	5	106	80	130	58	-	-	79	1,26
CSVC.60x65	60	65	71	235	240	163,68	-5	106	80	130	58	-	-	79	1,06
CSVC.60x70	60	70	58,5	230	245	177,95	-15	106	80	130	58	-	-	79	85

Continue next page...

How to order: Code + W x θ

CARROS AÉREOS CSVC
AERIAL CAM UNITS CSVC



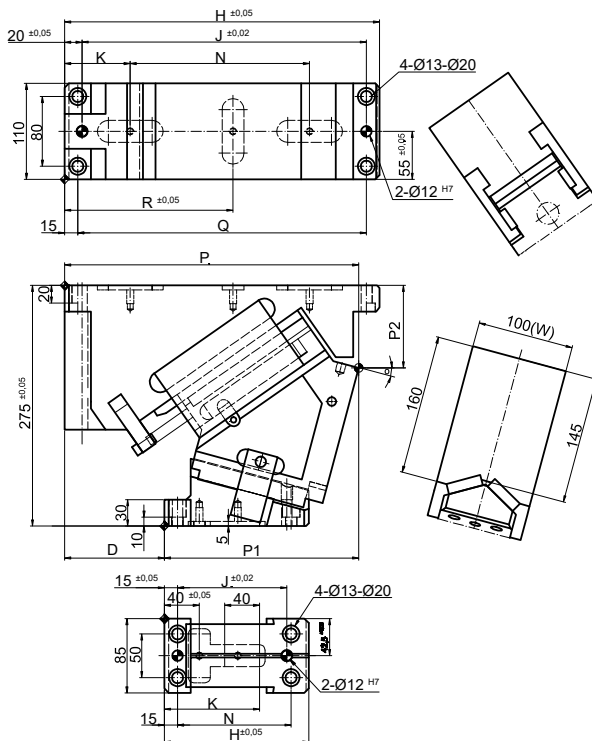
CSVC 85

Code	W Mounting Width	θ Working Angle	T Travel	P	P1	P2	D	H	J	K	N	R	Q	Gas Spring	
														Max Work Force	Extraction Force
	mm	°	mm	N	N	mm	N	mm	mm	mm	mm	mm	mm	kN	kN
CSVC.60x75	60	75	77.3	222	247	187.73	-25	106	80	130	58	-	-	79	0,64
CSVC.85x0	85	0	19.3	267	152	63	115	130	97	150	113,5	-	-	106	3,47
CSVC.85x5	85	5	21.3	272	162,39	67.16	110	130	97	150	113,5	-	-	106	3,47
CSVC.85x10	85	10	23.3	275,07	174,07	71.77	101	130	97	150	113,5	-	-	106	3,47
CSVC.85x15	85	15	25.4	277,99	185,99	19.72	92	130	97	150	113,5	-	-	106	3,47
CSVC.85x20	85	20	27.6	273,08	204,08	88,43	69	130	97	150	113,5	-	-	106	3,47
CSVC.85x25	85	25	30	271,3	211,3	94,15	60	130	97	150	113,5	-	-	106	3,47
CSVC.85x30	85	30	32,6	269,61	217361	100,26	52	130	97	150	113,5	-	-	106	3,47
CSVC.85x35	85	35	35,4	265,99	218,99	103,46	47	130	97	150	113,5	-	-	106	3,47
CSVC.85x40	85	40	38,6	262,39	225339	110,53	37	120	87	140	107	-	-	106	3,47
CSVC.85x45	85	45	42,3	256,82	233,82	117,97	23	120	87	140	107	-	-	106	3,47
CSVC.85x50	85	50	46,7	46,7	249,24	20	229,24	115	77	130	96,5	-	-	106	3,47
CSVC.85x55	85	55	52,3	52,3	250,67	19	231,67	110	77	130	96,5	-	-	106	3,1
CSVC.85x60	85	60	60	60	240,1	4	236,1	115	77	130	96,5	-	-	106	2,7
CSVC.85x65	85	65	71	71	235	-5	240	120	77	130	96,5	-	-	106	2,28
CSVC.85x70	85	70	58,5	58,5	230	-15	245	120	80	130	96,5	-	-	106	1,83
CSVC.85x75	85	75	77,3	77,3	228	-25	253	135	90	130	96,5	-	-	106	1,38

Continue next page...

How to order: Code + W x θ

CARROS AÉREOS CSVC AERIAL CAM UNITS CSVC



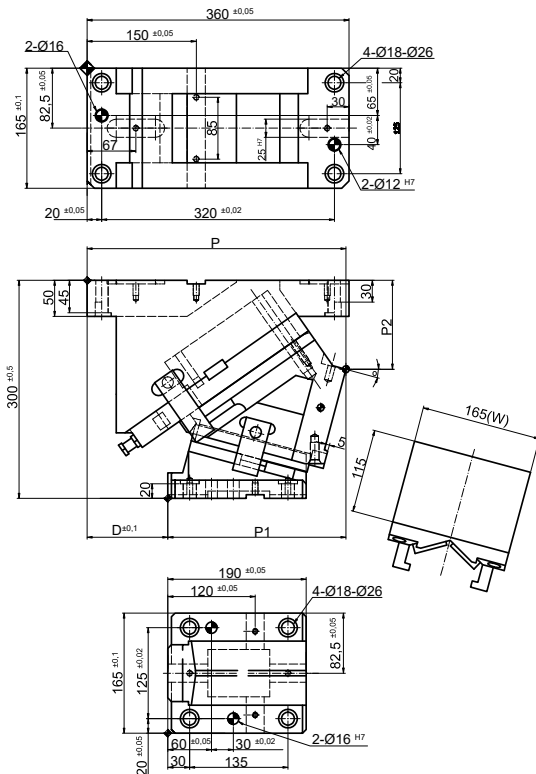
CSVC 110

Code	W Mounting Width	θ Working Angle	T Travel	P	P1	P2	D	H	J	K	N	R	Q	Max Work Force	Gas Spring
															Extraction Force
	mm	°	mm	N	N	mm	N	mm	mm	mm	mm	mm	mm	kN	kN
CSVC.110x0	110	0	32,1	318	180	70	138	330	295	70	185	137,5	300	160	3,53
CSVC.110x5	110	5	35,5	324,46	194,46	79,26	130	330	295	70	185	137,5	300	160	3,53
CSVC.110x10	110	10	38,9	330,22	209,22	84,13	121	360	325	70	185	137,5	330	160	3,53
CSVC.110x15	110	15	42,4	336,2	222,2	95,45	114	360	325	75	205	192,5	330	160	3,53
CSVC.110x20	110	20	46,1	339,32	234,32	100,42	105	360	325	75	205	192,5	330	160	3,53
CSVC.110x25	110	25	50	340,51	246,51	109,67	94	360	325	75	205	192,5	330	160	3,53
CSVC.110x30	110	30	54,3	348,36	278,36	120,54	70	360	325	75	205	192,5	330	160	3,53
CSVC.110x35	110	35	59	343,62	289,52	127,82	54	360	325	75	205	192,5	330	160	3,53
CSVC.110x40	110	40	64,3	332,59	268,59	139,41	64	360	325	75	205	192,5	330	160	3,53
CSVC.110x45	110	45	70,4	322,52	277,52	149,44	45	360	325	75	205	192,5	330	160	3,53
CSVC.110x50	110	50	77,8	309,47	284,47	156,17	25	150	105	95	110	-	-	160	3,53
CSVC.110x55	110	55	87,2	311,07	293,07	169,79	18	150	105	95	110	-	-	160	3,15
CSVC.110x60	110	60	100	327,93	320,93	168,85	7	150	105	95	110	-	-	160	2,75
CSVC.110x65	110	65	94,6	317,17	327,17	185	-10	150	105	95	110	-	-	160	2,32
CSVC.110x70	110	70	81,9	313,12	333,12	205	-20	150	105	95	110	-	-	160	1,77
CSVC.110x75	110	75	108,2	306,76	366,76	225	-30	150	105	95	110	-	-	160	1,34

Continue next page...

How to order: Code + W x θ

CARROS AÉREOS CSVC
AERIAL CAM UNITS CSVC



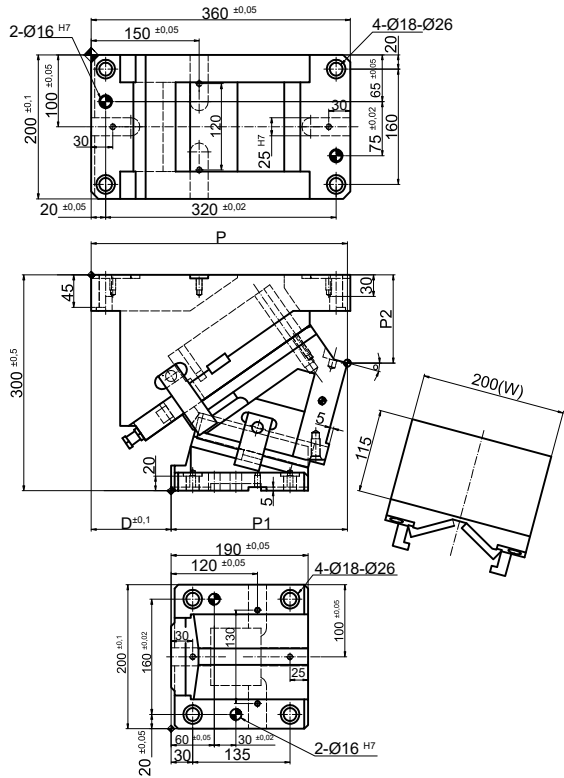
CSVC 165

Code	W Mounting Width	θ Working Angle	T Travel	P	P1	P2	D	H	J	K	N	R	Q	Max Work Force	Gas Spring
															Extraction Force
	mm	°	mm	N	N	mm	N	mm	mm	mm	mm	mm	mm	kN	kN
CSVC.165x0	165	0	32,1	360	210	95	150	-	-	-	-	-	-	183	8,06
CSVC.165x5	165	5	35,5	356,25	222,25	100,91	134	-	-	-	-	-	-	183	8,06
CSVC.165x10	165	10	38,9	359,27	241,27	111,09	118	-	-	-	-	-	-	183	8,06
CSVC.165x15	165	15	42,4	355,78	244,78	122,47	111	-	-	-	-	-	-	183	8,06
CSVC.165x20	165	20	46,1	355,68	262,68	130	93	-	-	-	-	-	-	183	8,06
CSVC.165x25	165	25	50	354,25	274,25	138,92	80	-	-	-	-	-	-	183	8,06
CSVC.165x30	165	30	54,3	357,28	287,28	148,28	70	-	-	-	-	-	-	183	8,06
CSVC.165x35	165	35	59	345,8	281,8	158,89	64	-	-	-	-	-	-	183	8,06
CSVC.165x40	165	40	64,3	344,27	286,27	170,38	58	-	-	-	-	-	-	183	8,06
CSVC.165x45	165	45	70,4	344,86	304,86	182,66	40	-	-	-	-	-	-	183	8,06
CSVC.165x50	165	50	77,8	327,27	317,27	195,63	10	-	-	-	-	-	-	183	8,06
CSVC.165x55	165	55	61	324,39	324,39	210,2	0	-	-	-	-	-	-	183	6,65
CSVC.165x60	165	60	40	319,59	324,59	215,63	-7	-	-	-	-	-	-	183	5,08
CSVC.165x65	165	65	47,3	314,23	329,23	231,4	-15	-	-	-	-	-	-	183	4,29
CSVC.165x70	165	70	58,5	309,07	333,07	245,67	-25	-	-	-	-	-	-	183	3,47
CSVC.165x75	165	75	58	301,08	336,08	260,24	-35	-	-	-	-	-	-	183	2,41

Continue next page...

How to order: Code + W x θ

CARROS AÉREOS CSVC
AERIAL CAM UNITS CSVC



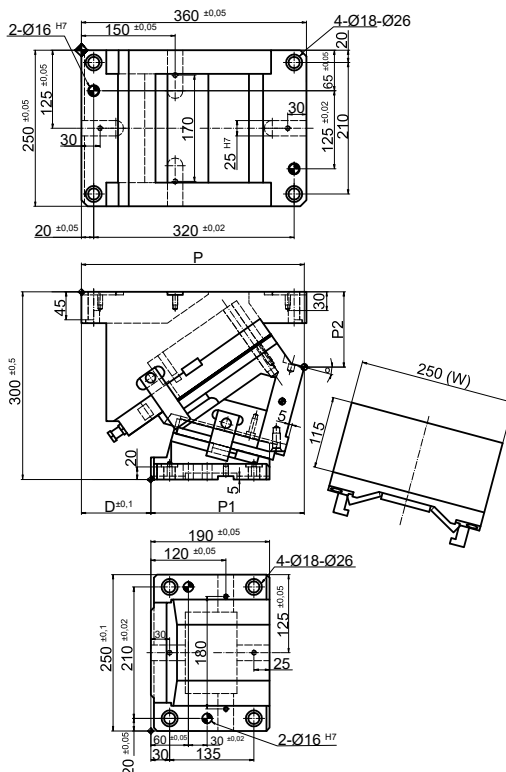
CSVC 200

Code	W Mounting Width	θ Working Angle	T Travel	P	P1	P2	D	H	J	K	N	R	Q	Max Work Force	Gas Spring
															Extraction Force
	mm	°	mm	N	N	mm	N	mm	mm	mm	mm	mm	mm	kN	kN
CSVC.200x0	200	0	32,1	360	210	95	150	-	-	-	-	-	-	230	8,06
CSVC.200x5	200	5	35,5	356,25	222,25	100,91	134	-	-	-	-	-	-	230	8,06
CSVC.200x10	200	10	38,9	359,27	241,27	111,09	118	-	-	-	-	-	-	230	8,06
CSVC.200x15	200	15	42,4	355,78	244,78	122,47	111	-	-	-	-	-	-	230	8,06
CSVC.200x20	200	20	46,1	355,68	262,68	130	93	-	-	-	-	-	-	230	8,06
CSVC.200x25	200	25	50	354,25	274,25	138,92	80	-	-	-	-	-	-	230	8,06
CSVC.200x30	200	30	54,3	357,28	287,28	148,28	70	-	-	-	-	-	-	230	8,06
CSVC.200x35	200	35	59	345,8	281,8	158,89	64	-	-	-	-	-	-	230	8,06
CSVC.200x40	200	40	64,3	344,27	286,27	170,38	58	-	-	-	-	-	-	230	8,06
CSVC.200x45	200	45	70,4	344,86	304,86	182,66	40	-	-	-	-	-	-	230	8,06
CSVC.200x50	200	50	77,8	327,27	317,27	195,63	10	-	-	-	-	-	-	230	8,06
CSVC.200x55	200	55	61	324,39	324,39	210,2	0	-	-	-	-	-	-	230	6,18
CSVC.200x60	200	60	40	319,59	324,59	215,63	-7	-	-	-	-	-	-	230	5,38
CSVC.200x65	200	65	47,3	314,23	329,23	231,4	-15	-	-	-	-	-	-	230	4,55
CSVC.200x70	200	70	58,5	309,07	333,07	245,67	-25	-	-	-	-	-	-	230	3,47
CSVC.200x75	200	75	58	301,08	336,08	260,24	-35	-	-	-	-	-	-	230	2,63

Continue next page...

How to order: Code + W x θ

CARROS AÉREOS CSVC
AERIAL CAM UNITS CSVC



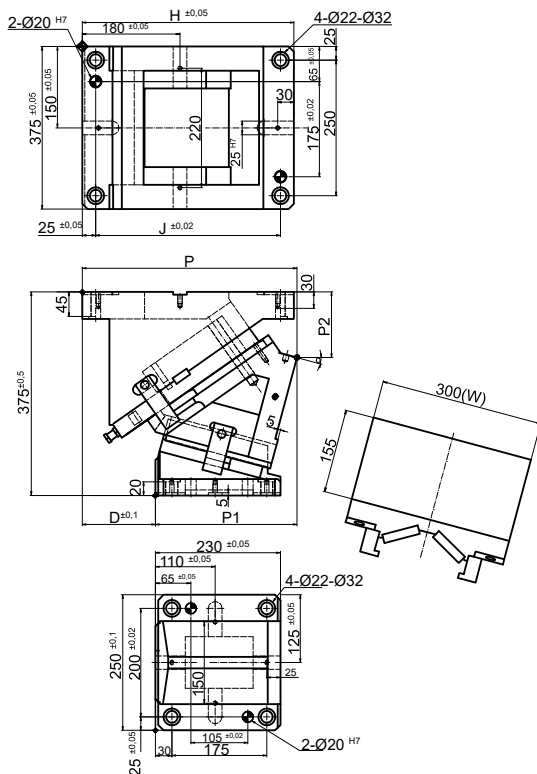
CSVC 250

Code	W Mounting Width mm	θ Working Angle °	T Travel mm	P	P1	P2	D	H	J	K	N	R	Q	Gas Spring	
														Max Work Force kN	Extraction Force kN
CSVC.250x0	250	0	32,1	360	210	95	150	-	-	-	-	-	-	302	16,12
CSVC.250x5	250	5	35,5	356,43	222,43	98,92	134	-	-	-	-	-	-	302	16,12
CSVC.250x10	250	10	38,9	359,62	241,62	109,12	118	-	-	-	-	-	-	302	16,12
CSVC.250x15	250	15	42,4	356,3	245,3	120,53	111	-	-	-	-	-	-	302	16,12
CSVC.250x20	250	20	46,1	356,37	263,37	128,12	93	-	-	-	-	-	-	302	16,12
CSVC.250x25	250	25	50	355,73	275,73	136,81	80	-	-	-	-	-	-	302	16,12
CSVC.250x30	250	30	54,3	358,28	288,28	146,55	70	-	-	-	-	-	-	302	16,12
CSVC.250x35	250	35	59	346,94	282,94	157,25	64	-	-	-	-	-	-	302	16,12
CSVC.250x40	250	40	64,3	345,56	287,56	168,85	58	-	-	-	-	-	-	302	16,12
CSVC.250x45	250	45	70,4	346,27	309,24	181,24	40	-	-	-	-	-	-	302	16,12
CSVC.250x50	250	50	77,8	328,8	318,8	194,34	10	-	-	-	-	-	-	302	16,12
CSVC.250x55	250	55	52,3	326,84	326,84	208,48	0	-	-	-	-	-	-	302	12,35
CSVC.250x60	250	60	60	320,19	327,19	214,13	-7	-	-	-	-	-	-	302	10,77
CSVC.250x65	250	65	71	319,23	334,23	231,4	-15	-	-	-	-	-	-	302	9,1
CSVC.250x70	250	70	58,5	313,07	338,07	245,67	-25	-	-	-	-	-	-	302	6,94
CSVC.250x75	250	75	77,3	306,08	341,08	260,24	-35	-	-	-	-	-	-	302	5,26

Continue next page...

How to order: Code + W x θ

CARROS AÉREOS CSVC AERIAL CAM UNITS CSVC



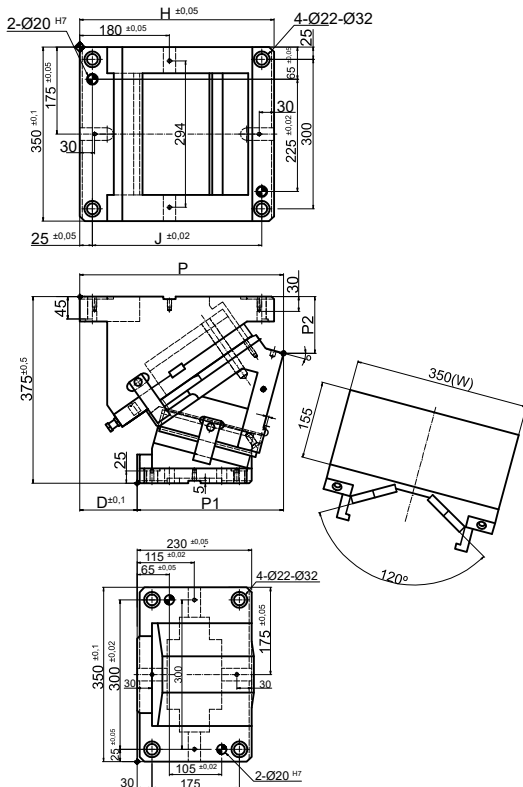
CSVC 300

Code	W Mounting Width	θ Working Angle	T Travel	P	P1	P2	D	H	J	K	N	R	Q	Max Work Force	Gas Spring
															Extraction Force
	mm	°	mm	N	N	mm	N	mm	mm	mm	mm	mm	mm	kN	kN
CSVC.300x0	300	0	38,6	395	232	98	163	390	340	-	-	-	-	389	15,58
CSVC.300x5	300	5	42,6	387,15	232,15	104,19	155	390	340	-	-	-	-	389	15,58
CSVC.300x10	300	10	46,7	394,13	249,13	111,86	145	390	340	-	-	-	-	389	15,58
CSVC.300x15	300	15	50,9	395,82	260,82	121,01	135	390	340	-	-	-	-	389	15,58
CSVC.300x20	300	20	55,3	397,08	277,08	131,59	120	390	340	-	-	-	-	389	15,58
CSVC.300x25	300	25	60	404,71	294,71	138,65	110	400	350	-	-	-	-	389	15,58
CSVC.300x30	300	30	65,1	408,22	323,22	146,89	85	400	350	-	-	-	-	389	15,58
CSVC.300x35	300	35	70,8	404,52	334,52	159,17	70	400	350	-	-	-	-	389	15,58
CSVC.300x40	300	40	77,1	100,46	345,46	167,3	55	400	350	-	-	-	-	389	15,58
CSVC.300x45	300	45	84,5	394,84	345,84	179,24	40	400	350	-	-	-	-	389	15,58
CSVC.300x50	300	50	93,3	393,35	376,36	196,04	17	-	-	-	-	-	-	389	15,58
CSVC.300x55	300	55	104	393,35	393,35	222,75	0	-	-	-	-	-	-	389	13,9
CSVC.300x60	300	60	120	393,3	403,35	149,61	-10	-	-	-	-	-	-	389	12,12
CSVC.300x65	300	65	94,6	387,48	415,48	166,49	-28	-	-	-	-	-	-	389	9,38
CSVC.300x70	300	70	73,1	78,65	423,65	281,99	-45	-	-	-	-	-	-	389	6,87
CSVC.300x75	300	75	96,6	364,72	429,72	296,88	-65	-	-	-	-	-	-	389	5,2

Continue next page...

How to order: Code + W x θ

CARROS AÉREOS CSVC
AERIAL CAM UNITS CSVC



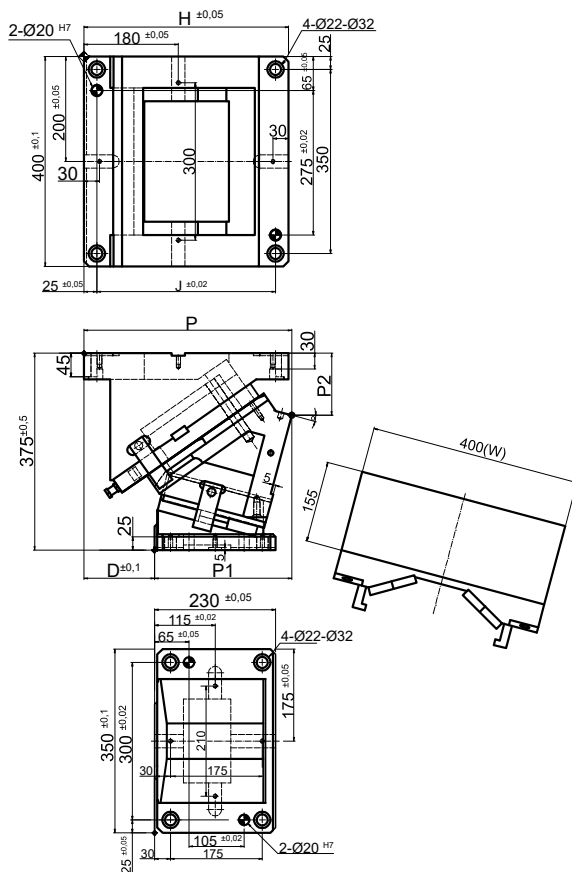
CSVC 350

Code	W Mounting Width	θ Working Angle	T Travel	P	P1	P2	D	H	J	K	N	R	Q	Gas Spring	
														Max Work Force	Extraction Force
	mm	°	mm	N	N	mm	N	mm	mm	mm	mm	mm	mm	kN	kN
CSVC.350x0	350	0	38,6	395	235	85	160	390	340	-	-	-	-	428	29,31
CSVC.350x5	350	5	43,6	409,62	254,62	95,02	155	390	340	-	-	-	-	428	29,31
CSVC.350x10	350	10	46,7	414,52	247,52	104,67	140	390	340	-	-	-	-	428	29,31
CSVC.350x15	350	15	50,9	408,6	293,6	113,76	115	390	340	-	-	-	-	428	29,31
CSVC.350x20	350	20	55,3	433,92	312,92	122,21	110	390	340	-	-	-	-	428	29,31
CSVC.350x25	350	25	60	421,53	331,53	129,96	90	410	360	-	-	-	-	428	29,31
CSVC.350x30	350	30	65,1	418,5	348,5	136,94	70	410	360	-	-	-	-	428	29,31
CSVC.350x35	350	35	70,8	415,89	365,89	153,12	50	410	360	-	-	-	-	428	29,31
CSVC.350x40	350	40	77,1	410,78	380,78	168,43	30	410	360	-	-	-	-	428	29,31
CSVC.350x45	350	45	84,5	405,25	395,25	182,84	10	410	360	-	-	-	-	428	29,31
CSVC.350x50	350	50	93,3	397,37	407,37	201,32	-10	-	-	-	-	-	-	428	29,31
CSVC.350x55	350	55	87,2	398,61	418,61	214,69	-20	-	-	-	-	-	-	428	24,49
CSVC.350x60	350	60	90	392,76	427,76	235,67	-35	-	-	-	-	-	-	428	21,99
CSVC.350x65	350	65	94,6	393,83	438,83	255,31	-40	-	-	-	-	-	-	428	17,53
CSVC.350x70	350	70	87,7	394,78	444,78	274,53	-50	-	-	-	-	-	-	428	13,9
CSVC.350x75	350	75	96,6	394,55	449,55	295,21	-55	-	-	-	-	-	-	428	9,8

Continue next page...

How to order: Code + W x θ

CARROS AÉREOS CSVC AERIAL CAM UNITS CSVC



CSVC 400

Code	W Mounting Width	θ Working Angle	T Travel	P	P1	P2	D	H	J	K	N	R	Q	Max Work Force	Gas Spring
															mm
CSVC.400x0	400	0	38,6	395	237	88	158	390	340	-	-	-	-	473	23,37
CSVC.400x5	400	5	42,6	387,15	232,15	94,19	155	390	340	-	-	-	-	473	23,37
CSVC.400x10	400	10	46,7	394,13	249,13	106,86	145	390	340	-	-	-	-	473	23,37
CSVC.400x15	400	15	50,9	395,82	260,82	118,01	135	390	340	-	-	-	-	473	23,37
CSVC.400x20	400	20	55,3	397,08	297,08	131,59	100	390	340	-	-	-	-	473	23,37
CSVC.400x25	400	25	60	404,71	319,71	138,65	85	400	350	-	-	-	-	473	23,37
CSVC.400x30	400	30	65,1	408,22	343,22	146,89	65	400	350	-	-	-	-	473	23,37
CSVC.400x35	400	35	70,8	404,52	354,52	159,17	50	400	350	-	-	-	-	473	23,37
CSVC.400x40	400	40	77,1	400,46	360,46	167,3	40	400	350	-	-	-	-	473	23,37
CSVC.400x45	400	45	84,5	394,84	374,84	179,24	20	400	350	-	-	-	-	473	23,37

How to order: Code + W x θ